



**EASL**™

The Home of  
Hepatology

# ANNUAL REPORT 2022

# Who we are

EASL, the European Association for the Study of the Liver, founded in 1966, is a medical association dedicated to pursuing excellence in liver research, to the clinical practice of liver disorders, and to providing education to all those interested in hepatology.

# Our mission

EASL's mission is to be the Home of Hepatology, uniting a community of like-minded professionals who deal with liver disease, and allowing them to reach their full potential in its prevention and cure.

# Our purpose

EASL closely collaborates with relevant groups and individuals, in particular on the following workstreams:

- Science: promote research, innovation, collaboration
- Education: primary source for liver related education and professional development
- Advocacy: highest standard of care for patients, advisors to authorities. Public awareness.
- Community: uniting the hepatology community.

# Table of Contents

1. Message from our Secretary General and Vice-Secretary	2
2. EASL Leadership	7
3. EASL Office	13
4. EASL Events	16
5. EASL Impact Projects	18
6. EASL Schools	19
7. EASL Studio	21
8. EASL Community and Membership	23
9. EASL Awards	25
10. EASL Fellowships and Research Support	27
11. Financial Report	29
12. Partners	36

# MESSAGE FROM OUR SECRETARY GENERAL AND VICE-SECRETARY

## Uniting hepatology

### Leveraging connections through the return of in-person events

For EASL and the global hepatology community, 2022 was a year in which we transitioned from fully digital events back to predominantly face-to-face meetings. After kicking off the year with an online Viral Hepatitis Elimination Meeting, and an entirely digital EASL Liver Cancer Summit, the International Liver Congress 2022, held on 22-26 June in London, United Kingdom, marked the first full scale return of our face-to-face meetings after several challenging years. Over 7,000 delegates from 110 countries participated, including

both familiar faces and many newcomers. During the summer of 2022 we also organised four very successful EASL Schools, gathering over 100 students for intensive hands-on learning. The EASL NAFLD Summit in Dublin, Ireland brought together over 500 delegates and faculty for fruitful in-person discussions. The AASLD-EASL Masterclass held in Savannah, Georgia, USA, was a resounding success, convening outstanding young talents from Europe and North America and preparing them to become future leaders in academic hepatology. In April 2023, the EASL Liver Cancer Summit in Estoril, Portugal, saw record-breaking attendance, while the monothematic conference on Biliary Fibrosis in Florence, Italy also drew

significant interest. These successful events demonstrate that the liver community is eager to collaborate to advance the field of hepatology.

### A growing community of dedicated members

At our London congress, we had the chance to introduce our new membership strategy during the General Assembly. Over its 66 years of existence EASL has grown into a leading hepatology association, and we believe that as a medical association there is strength in numbers. By building a stronger, more representative, and diverse community, we can achieve more and deliver better services to our members. Our new model makes

## EASL SOCIAL MEDIA METRICS AS OF APRIL 2023



EASL more accessible for the next generation of hepatologists, as well as nurses, allied health professionals, and patients. It also ensures that professionals from emerging economies and resource limited economies have greater access to our expertise and educational offers. The community has responded strongly to the new membership strategy since its implementation, reaching over 5,900 members from 112 countries in 2022 - a 20% increase from 2021. We will continue to improve our membership offer in the coming year, and strive to create an inclusive, diverse, and engaged community.

### EASL values

EASL continues to be guided by certain core principles, our values have always been and will continue to be our people, our purpose and our planet. This means that we must not only inspire our professional members and advocate for our patients but that we must also recognise our relationship with the environment. As elaborated in our recent piece in the Journal of Hepatology we are currently faced with a syndemic whereby climate change leads to a deterioration of health (in particular the development of certain liver diseases) while the increased need to deliver healthcare (not least in hepatology and related fields) is responsible for significantly higher environmental impact. It is up to associations such as EASL, who are aware of these climate-hepatology connections, to be among the vanguard driving change to restore and maintain human liver health and a healthy environment.

### Effective governance in a changing landscape

One of the key priorities of the last year has been navigating

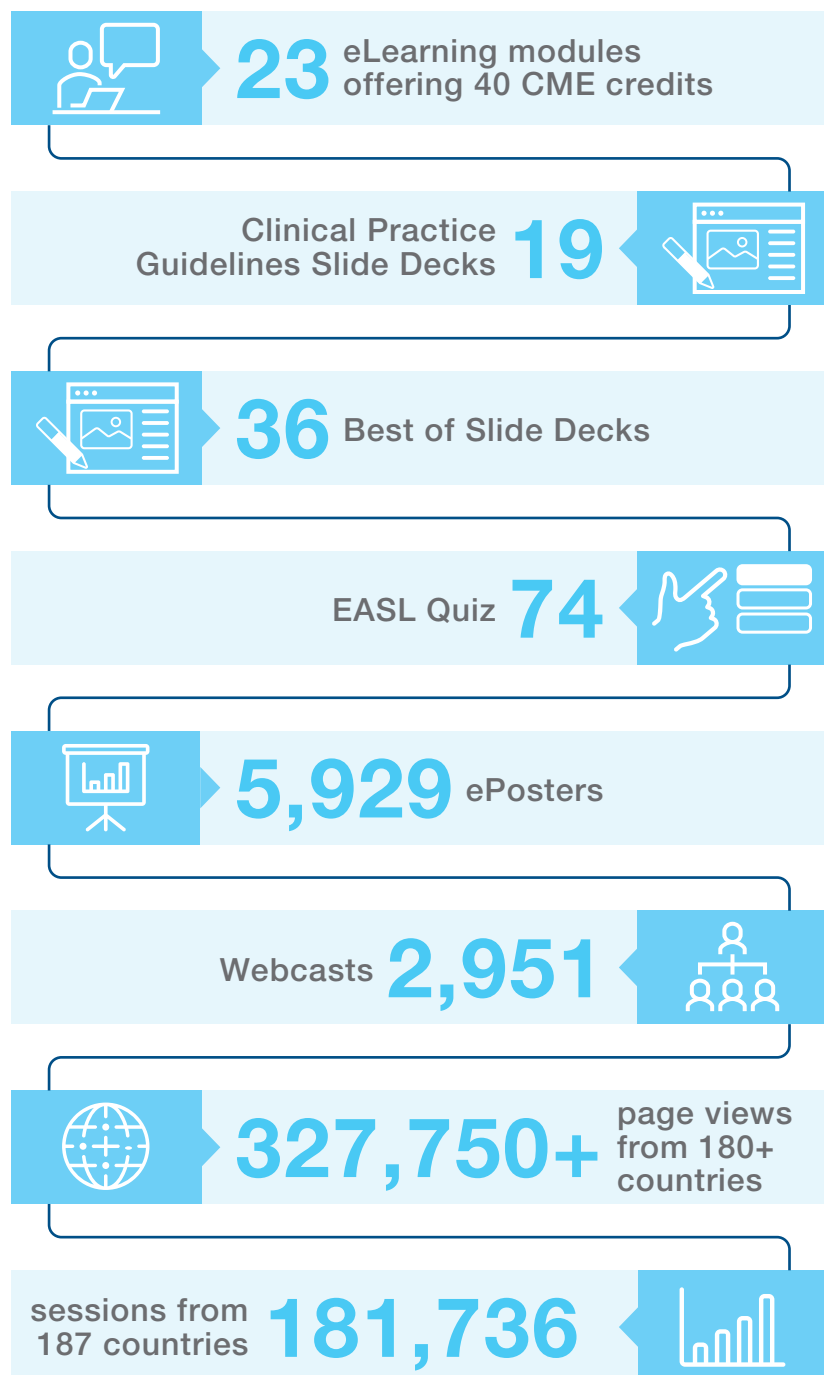
the post-COVID landscape, and adjusting our organisation’s operating and business models to ensure that we are fit for purpose as a medical association.

This led us to review EASL’s Articles of Association and critically examine our governance structure during the summer of 2022. As the medical and scientific landscape

continues to evolve, increased collaboration by strengthening existing partnerships and forging new relationships with all stakeholders is needed, to successfully unite hepatology in Europe and globally.

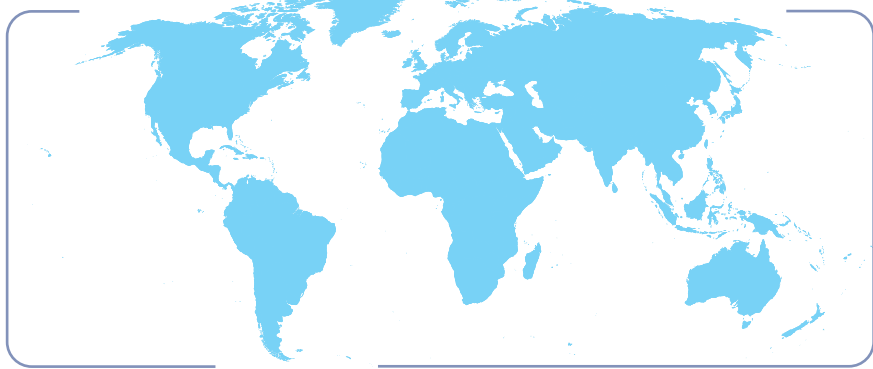
To deliver the best possible science and education to our community, and to ensure a broader European representation,

## EASL CAMPUS METRICS 2022



## ILC 2022: ATTENDANCE AND CONTRIBUTIONS

DELEGATES  
**6,994**  
registrations  
from  
**116**  
COUNTRIES



**193**  
oral presentations



**2,361**  
abstracts submitted



**1,561**  
Posters

we expanded the EASL Scientific Committee from 6 to 8 members. We also established two crucial new positions in the EASL Governing Board. The External Affairs Councillor supports the Governing Board with promoting EASL's strategic vision, and positioning EASL as an influential and reliable partner for National Associations, Sister Societies, and other related organisations. The Internal Affairs Councillor promotes community engagement, membership growth, sustainable practice, and good governance.

Additionally, we have now formed the EASL Management Committee, comprised of senior Governing Board representatives. This committee reports to the Governing Board and prioritises the GB agenda by managing day-to-day operations, allowing us to remain nimble in these rapidly changing times. With this increased capacity we can step up our efforts to improve our structures and policies to run a more effective and efficient association.

We are grateful to our membership for agreeing to these changes during the extraordinary General Assembly in October 2022, and thank you for your trust in us, as we make sure that our association establishes a robust governance structure for the coming years.

### Exceptional achievements for EASL Journals

EASL's flagship monthly journal, the Journal of Hepatology, has achieved unparalleled success with an impact factor of 30.083 in 2021, surpassing its 2020 score of 25.083. In other great news, our first open-access journal JHEP Reports has received an impressive impact factor of 9.917, within three years of its first issue in May 2019. The respective editorial teams, boards, Journal office team, and peer reviewers deserve commendation for their outstanding work in ensuring the exceptional performance of both journals.

### Nurturing global partnerships

As the study of the liver is a truly global endeavour, and a key priority for EASL is partnering with our sister societies around the world, the American Association for the Study of Liver Diseases (AASLD), the Asociación Latinoamericana para el Estudio del Hígado (ALEH), and the Asian Pacific Association for the Study of the Liver (APASL). We are also excited to welcome the Society of Liver Disease in Africa (SOLDA) to the global liver community and look forward to fruitful collaborations in the coming years.

### European research collaborations

In our efforts to unite the European liver research community, we welcomed the Consortium for the study of Drug and Herbal & Dietary Supplement-Induced Liver Injury (DHILI) – a multidisciplinary network of clinicians, scientists,

patients, industry partners, and regulators. They join the longstanding EF-CLIF, ENS-CCA, SALVE, VALDIG, BAVENO, and Consortium for Regenerative Hepatology as officially endorsed EASL Consortia.

The new Horizon Europe funded project GENIAL joins the A-TANGO, DECISION, LITMUS, LIVERSCREEN, and MICROB-PREDICT projects of which EASL supports its communication and dissemination work.

### Celebrating World Liver Day for the first time

The establishment of April 19 as World Liver Day through our new joint initiative is a great example of our commitment to global partnerships and concerted efforts to raise awareness for our specialty. This day will serve

as a platform to enhance liver health awareness, not only within the liver community but also among the general public.

### NAFLD/NASH in the spotlight

Key efforts in which EASL is actively involved include the Wilton Park dialogue to support the development of a NAFLD research and action roadmap; the global NAFLD Nomenclature Consensus Process; and the “Healthy Liver, Healthy Lives: global coalition for action on fatty liver disease”. These initiatives call for collaboration with a community of experts and practitioners. EASL has built a global and multidisciplinary network of stakeholders, including affected populations that are ready and empowered to support a movement on

fatty liver disease. To raise awareness on NAFLD’s public health significance, EASL organised a side-event during the 76<sup>th</sup> World Health Assembly entitled “Together for Better Liver Health: Convening Key Stakeholders and Mobilising Action for NAFLD/NASH in WHO Policy”. This high-level meeting aimed to first discuss the problem scope of these diseases, and to set priorities and goals for future engagement with the World Health Assembly and World Health Organization. The second step will be prioritising healthier livers on their agenda and determining how to bring Member States to make a bold commitment and meet SDG goals 3 and 10 together with relevant stakeholders. The ultimate goal will be to develop a policy paper with an agreed roadmap, setting up a coalition



of partners with a shared mission to address the issue.

### EASL Outreach

Another special initiative that is taking shape is the EASL Outreach Steering Committee, that will be able to provide international support and assistance to liver health professionals and their patients in parts of the world that we have not traditionally been able to provide help.

### Honouring the legacy of our foundation

Despite the best efforts of many individuals, the EILF Governing Board has submitted a request to the Swiss authorities to dissolve the Foundation, due to ongoing financial difficulties. We are immensely grateful to Prof. Massimo Colombo for his leadership and dedication to the Foundation. EASL will continue to support the EILF-EASL Fellowship Programmes and remains committed to honour the agreements with the Fellowship recipients and institutes currently hosting EILF-EASL Fellows.

### Strategy

We are approaching the halfway point of our four-year strategy, which began with our terms as Secretary General and Vice-Secretary. Our efforts to unite the field of hepatology have led to important milestones, including the new membership strategy, refreshed governance structure, and new global collaborations and partnerships.

However, much work remains to be done. As detailed in our editorial in the Journal of Hepatology of May 2023, EASL's primary responsibility as a scientific society is to its members. We continue to provide our community of scientists and researchers with opportunities to publish their latest research in the Journal of Hepatology and JHEP Reports, and to present their work at our Congress and other events. Through our clinical practice guidelines clinicians stay up to date with the latest recommendations. EASL Campus and our full suite of educational offerings are valued resources for both established researchers and clinicians, as well as the next

generation of up-and-coming hepatologists. The EASL Studio, your weekly broadcast news on hepatology and related fields, of which we have now hosted over 80 episodes with more than 200 global experts, ensures we are keeping pace of an ever-changing society and a rapidly evolving digital landscape.

More and more, EASL collaborates with a multidisciplinary group of partners, researchers, scientists, patients and patient representatives, nurses, and allied health professionals to ensure liver diseases get the necessary attention on the public health agenda.

We are grateful for the continued support of our members, our colleagues on the EASL Governing Board, Committees and Task Forces, healthcare industry partners and sponsors, speakers and delegates at our events, EASL Office staff, and all of those who share their experiences and expertise in forging the future of hepatology.





# EASL LEADERSHIP

## EASL Governing Board

Over the past year, we focused on adapting our organisation's models to fit the post-COVID landscape. We examined our governance structure, expanded the Scientific Committee, and

added two new positions to the Governing Board. The External Affairs Councillor promotes EASL's strategic vision and partnerships, while the Internal Affairs Councillor focuses on community engagement and governance. We formed the Management Committee to manage day-to-

day operations and improve our association's effectiveness. These changes were agreed upon by our members during the General Assembly in October 2022, and we thank them for their trust in us as we establish a strong governance structure for the future.

## Management Committee

### Secretary General



Thomas Berg  
Germany

### Vice-Secretary



Aleksander Krag  
Denmark

### Scientific Committee



Tobias Böttler  
Germany

### Treasurer



Francesco Negro  
Switzerland

### Educational Councillor



Ulrich Beuers  
The Netherlands

### Public Health Councillor



Maria Buti  
Spain

### External Affairs Councillor



Francesco Paolo Russo  
Italy

### Internal Affairs Councillor



Ahmed Elsharkawy  
United Kingdom

## Scientific Committee



Tobias Böttler  
Germany



Virginia Hernández-Gea  
Spain



Ana Lleo  
Italy



Jean-Charles Nault  
France



Bogdan Procopet  
Romania



Debbie Shawcross  
United Kingdom



Eric Trépo  
Belgium



Saskia van Mil  
The Netherlands

- **Leadership** handed over by Emmanuel Tsochatzis to Tobias Böttler
- Nominations and appointments of four **new members**: Ana Lleo, Bogdan Procopet, Debbie Shawcross and Eric Trépo
- Engagement with **online and onsite events**
- Reviewing, commenting on, and developing **programmes** for events and summits
- Coordinating the development of **Clinical Practice Guidelines**
- Providing input on the allocations of **fellowships and grants**
- Improving **abstract review system**, ensuring a more homogeneous evaluation process across reviewers

## Educational Committee



Ulrich Beuers  
*Educational Councillor  
Chair*  
The Netherlands



Sven Francque  
*Educational Councillor  
Elect*  
Belgium



Jesus Bañales  
Spain



Henning Grønbaek  
Denmark



Verena Keitel  
Germany



Josep Llovet  
Spain



Rajeshwar Mookerjee  
United Kingdom



Krista Rombouts  
United Kingdom

- Nomination and appointment of **new member**: Sven Francque as the EASL Educational Councillor Elect
- Massive growth in **EASL Campus**: 9,000+ resources and 327,750 page views from 187 countries
- **Event Slide Decks**, the **EASL Quiz** series, **EACCME accredited online courses** and modules, offering blended learning
- Launch of **EASL Studio** seasons 2, 3 and 4
- **Gamification** of EASL Campus (151 badges, 100 levels, challenges)

## Policy, Public Health and Advocacy Committee



Maria Buti  
Public Health Councillor  
Chair  
Spain



Peter Jepsen  
Denmark



Loreta Kondili  
Italy



Marko Korenjak  
Belgium



Jeffrey Lazarus  
Spain



Frank Murray  
Ireland



Jörn Schattenberg  
Germany

- Relaunch of the **MEP Friends** of the Liver group
- Event at the **European Parliament**, “The final push to eliminate viral hepatitis – how can the EU lead the successful achievement of this global public health priority”, in collaboration with the **ACHIEVE Coalition**.
- Launch of the **EASL Studio Policy Dialogues** on 28<sup>th</sup> July, on the occasion of World Hepatitis Day
- Active participation in the **Awareness Week on Alcohol Related Harm (AWARH)**
- Establishment of **World Liver Day** to raise awareness on liver health and decrease the burden of liver diseases.
- **Creation of “Love Your Liver” social impact projects in conjunction with EASL Congress** to raise awareness for liver health, promote early detection and screening, and attract key talent to the field of hepatology.
- **EASL Event at the sidelines of the 76th World Health Assembly**; “Together for Better Liver Health – Mobilising Action for Fatty Liver Disease”.

## EASL Patient Synergies



- January 2022, celebrating two years of EASL **Patient Synergies**: network for European umbrella patient organisations engaged in liver diseases
- Nine **members** as of April 2023
- **EASL Patient Forum** held in June 2022, during the International Liver Congress, on the impact of stigma and discrimination
- **Patient engagement** at all levels of EASL activity

## EU-Funded projects



EASL remains the communications and dissemination arm for six major EU-funded projects for diagnosing and combatting liver disease:

- A-TANGO
- DECISION
- LITMUS
- LiverScreen
- MICROB-PREDICT
- GENIAL

## Ethics Committee



Christian Trautwein  
*Chair*  
Germany



Marina Berenguer  
Spain



Valérie Paradis  
France



Herbert Tilg  
Austria



Mark Thursz  
United Kingdom

- Yearlong **monitoring and management of interests** at EASL leadership level
- Regular review of **Clinical Practice Guidelines panels**
- Engagement in BioMed Alliance Europe's **Code of Conduct** Working Group

## EASL Journals

### JOURNAL OF HEPATOLOGY



Paolo Angeli  
*Editor-In-Chief*  
Italy



Patrizia Burra  
*Deputy Editor*  
Italy



Vlad Ratziu  
*Co-editor*  
France



Bruno Sangro  
*Co-editor*  
Spain



Frank Tacke  
*Co-editor*  
Germany



Stefan Zeuzem  
*Co-editor*  
Germany

- EASL *Journal of Hepatology*: announcement of our 2021 **impact factor** of 30.083.

### JHEP REPORTS



Jessica Zucman-Rossi  
*Editor-In-Chief*  
France



Marina Berenguer  
*Editor*  
Spain



Sven Francque  
*Editor*  
Belgium



Thierry Gustot  
*Editor*  
Belgium



Sophie Lotersztajn  
*Editor*  
France



Robert Schwabe  
*Editor*  
USA



Morris Sherman  
Canada



Salvatore Piano  
Italy



Kathleen Corey  
USA

- EASL *JHEP Reports*: announcement of our first **impact factor** of 9.917 for 2021.

## Nurses and AHP Task Force



Patrizia Künzler-Heule  
*Chair*  
Switzerland



Malene Barfod O'Connell  
Denmark



Nuria Fabrellas  
Spain



Kathryn Jack  
United Kingdom



Denise Schäfer  
Austria



Jennifer Towey  
United Kingdom



Felicity Williams  
United Kingdom

- Two new **members**: Malene Barfod O'Connell and Denise Schäfer
- Dedicated sessions and abstracts at **ILC 2022**.
- The **Rising Star Award** at ILC 2022 was awarded to Catherine Wood. This award aims to recognise excellence in nurses and Allied Health Professionals in hepatology.
- Two **webinars** on how to get started in research and research in practice.

## Young Investigators Task Force



Marta Afonso  
Portugal



Mattias Mandorfer  
Austria



Johanne Poisson  
France



Anna Saborowski  
Germany



Philipp Schwabl  
United Kingdom

- Dedicated **YIs Forum and Symposium** at ILC 2022
- Three webinars on overcoming gender gaps in hepatology, getting **ready for ILC 2022**, and designing clinical studies
- Selection of two recipients of the **Emerging Leader Award**: María Jesús Perugorria and Salvatore Piano
- Launch of the **YI Newsletter**

# EASL OFFICE

## EASL Office, May 2023

In 2022, we made a significant and welcome shift back to working face to face after the COVID-19 pandemic. At the same time, we maintained the

flexibility and benefitted from new digital skills we acquired in the past years. A hybrid working model perfectly ensures the achievement of our priorities: a focus on our constituent bodies and members, operational excellence, diligent business management, and strategic

growth. We take pride in our diverse team, which is growing in parallel to the Association's activities and needs. Our 35 staff members (24 female and 11 male), come from 14 different nationalities, speak 15 languages, and 6 hold scientific doctorates.



# EASL Office, May 2023

## Management & Administration

### Executive Director



Ben Hainsworth

### Executive Assistant



Laurence Comont

### Human Resources



Sophie FUX

### Finance



Mehdi Boudjani



Hazel Parome



Pierre Alvarez

### Intern



Keisha Okoro

Publications	Science & Education	Scientific Programme	Policy & Public Health
Joël Walicki	Mounia Heddad-Masson	Patricia Pochelon	Yoanna Nedelcheva
Duncan Anderson	Laurent Perrin	Rocío Daviña	Morgane Guex
Pablo Echeverria	Elinam Gayi	Céline Santo	Maraika Black
Jiyeong Adams	Laura Daguerre	Katerina Katsarou Intern	
Kristina Jajcevic			

## Events & Operations



Carina Schmidt



Claire Chombeau



Christophe Abetinot



Federico Galati

## Business Development



Olga Kruger



Laura Casadei



Wouter Kruijs



Chiara Hartmann



Laudina Asomaning



Gisela Valky-Pons



Géraldine Fankhauser



Giovanna Giuga



Johnny Ainsworth



Adonia Dhanjal

## Association & Community Services





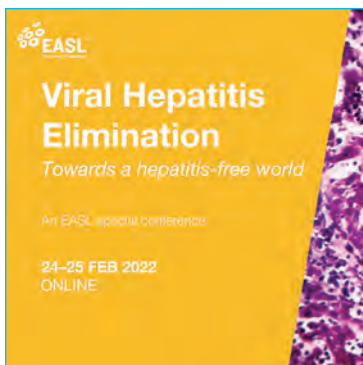
# EASL EVENTS 2022

EASL events are recognised worldwide for their scientific excellence and for covering the full spectrum of hepatology.



## EASL Liver Cancer Summit 2022, Online, 3–4 February 2022

- 464 delegates from 46 countries
- covering basic, translational, and clinical data, on hepatocellular carcinoma, cholangiocarcinoma, and rare primary liver cancers



## Special Conference on Viral Hepatitis Elimination 2022, Online, 24–25 February 2022

- 254 delegates from 43 countries
- assessing the burden of viral liver disease



## International Liver Congress™ 2022, London (UK), 22–26 June 2022

- 6,994 delegates from 116 countries
- a ground-breaking event for the global hepatology community



## EASL NAFLD Summit 2022, Dublin (Ireland), 15–17 September 2022

- 532 delegates from 51 countries
- an update on the epidemiology, public health relevance, key challenges in clinical practice and drug development in NASH and NAFLD



# EASL IMPACT PROJECTS

Value creation at EASL does not stop at its members, partners, and delegates. EASL is committed to providing a lasting, positive impact on the lives of those who are connected to our events, as well as all the people living and working in the communities who host them. EASL Impact projects are designed to leave a lasting impression of sustainable action and healthy change.

In 2022, EASL launched its first impact projects to coincide with the International Liver Congress™ (ILC 2022) hosted in London, UK.

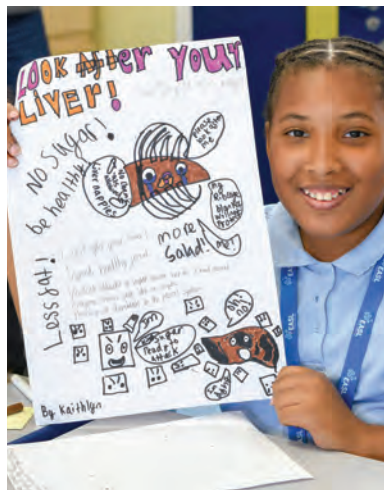
Activities took place locally in London, on the congress premises, in the community & in medical schools while leveraging lay media to raise awareness nationally and even internationally.

At ILC 2022, our impact events were focused on providing early education on liver health, attracting key talent in the field, and supporting efforts to improve preventive screening of liver diseases.

## Media Coverage:

The projects were covered by various national press outlets within the UK and abroad. EASL used the media momentum to address liver health, prevention, early detection, and stigma more broadly with public readers across Europe.

- Channel 4 News
- La Repubblica
- Le Figaro Sante
- Euractiv
- El Pais
- 20 Minutos
- Elle
- CNN Portugal



# EASL SCHOOLS

## 2022

The EASL Schools help train the next generation of hepatologists and scientists. Through individual work, collaborative teamwork and discussions with faculty, students gain invaluable insight into new experimental techniques and clinical approaches.

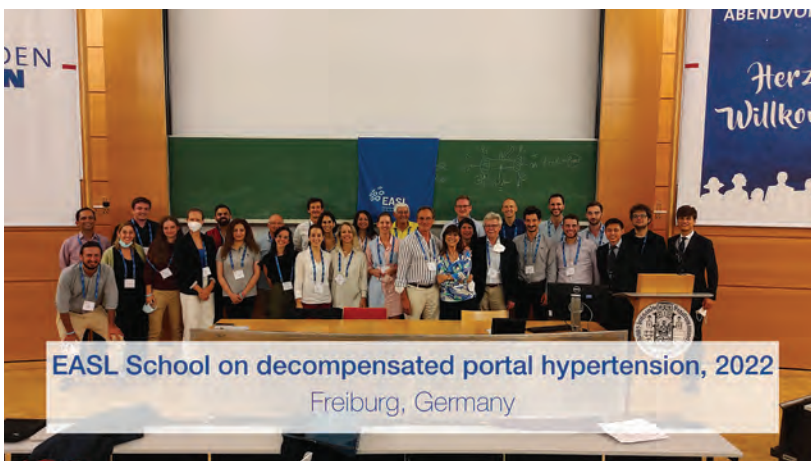
### Clinical problems in management of cirrhosis and portal hypertension-related complications, Padua (Italy), 17–18 June 2022

- 22 students from 13 countries
- Organisers: Carlo Merkel, Sara Montagnese, Marco Di Pascoli, Marco Zoli



### Decompensated portal hypertension: TIPS from A to Z, Freiburg (Germany), 1–2 July 2022

- 22 students from 11 countries
- Organisers: Manuela Merli, Martin Rössle



## The diagnosis and clinical management of immune-mediated liver diseases: recent advances and controversies, London (UK), 1–2 July 2022

- 20 students from 11 countries
- Organisers: Tu Vinh Luong, Massimo Pinzani, Douglas Thorburn



## Basic Science School: Precision Cut Liver Slices and Liver Organoids – versatile ex-vivo models of liver disease, London (UK), 15–17 September 2022

- 21 students from 11 countries
- Organisers: Shilpa Chokshi, Elena Palma, Luca Urbani



# EASL STUDIO

## Your weekly hepatology broadcast news

In response to the rapidly evolving digital landscape and following the COVID-19 pandemic, in October 2021, EASL launched its new communication platform to discuss the latest news, techniques, and advances in hepatology and related fields.

The aim of EASL Studio is to:

- Provide a short comprehensive overview and introduction into relevant topics.
- React to current events as they happen, such as the recent outbreak of unexplained acute hepatitis in children.
- Gather multiple stakeholders around specific topics.
- Give a voice to members of the EASL community.
- Engage the EASL community through live tweeting and online discussions.



**3 Seasons of EASL Studio**



**54 Episodes in 2021-2022**



**+44,000 Cumulative views**



**165 International experts from 25 countries**



**72 Countries in the audience**



**15 Industry Partners**



**35 Podcasts for 5000+ downloads**



**Listened to in 47 countries**

## EASL Studio Editorial Board

Thomas Berg, University of Leipzig, Germany

Aleksander Krag, Odense University Hospital, Denmark

Paolo Angeli, University of Padova, Italy

Jesús Bañales, Biodonostia Health Research Institute, Donostia University Hospital, San Sebastian, Spain

Ramon Bataller, Hospital Clínic de Barcelona, Spain

Marina Berenguer, La Fe University Hospital, University of Valencia, Spain

Tobias Böttler, University Hospital Freiburg, Germany

Maria Buti, Vall d'Hebron Barcelona Hospital, Spain

Ahmed Elsharkawy, Queen Elizabeth Hospital, UK

Rajiv Jalan, University College London, UK

Verena Keitel, University Hospital Magdeburg, Germany

Patrizia Künzler-Heule, Cantonal Hospital St.Gallen, Switzerland

Tom Lüdde, University Hospital Duesseldorf, Germany

Darius Moradpour, Lausanne University Hospital and University of Lausanne, Switzerland

Massimo Pinzani, University College London, UK

Pierre-Emmanuel Rautou, Beaujon Hospital, Clichy & Paris-Cité University & INSERM, France

Thomas Reiberger, Medical University of Vienna, Austria

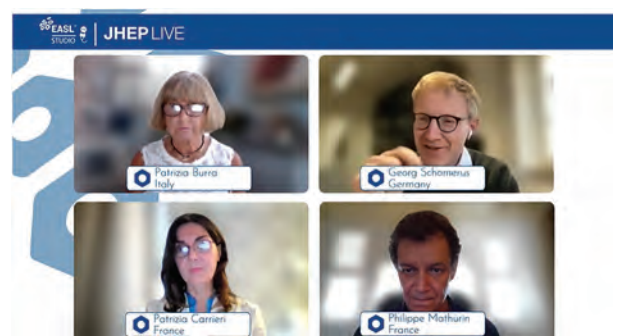
Debbie Shawcross, King's College London, UK

Oren Shibolet, Tel-Aviv Medical Center and Tel-Aviv University, Israel

Eric Trépo, CUB Hôpital Erasme, ULB, Brussels, Belgium

Shira Zelber-Sagi, School of Public Health, University of Haifa & Tel Aviv Medical Center, Israel

Jessica Zucman-Rossi, Paris Cité University, France





# COMMUNITY AND MEMBERSHIP

We believe that as a medical association there is strength in numbers. **Our MyEASL Community already counts over 40,000 people from 175 countries.** If we build a stronger, more representative, and diverse community, we can achieve more and deliver better services to our members. We want to make EASL more accessible for the next generation of hepatologists, as well as nurses, allied health professionals, and patients. We also want to welcome more professionals from emerging economies and resource limited economies so that they may benefit from our expertise and educational offers.

Therefore, a new membership model was launched in 2022, which includes the following changes:

- We lowered the access barriers of EASL membership by further reducing the fees for trainees and postdocs, nurses, allied health professionals and patients.
- We introduced reduced membership fees for professionals from emerging economies and provide complimentary membership to professionals from resource-limited economies.

We increased the value of EASL membership by enhancing existing and adding new benefits.

In solidarity and support to those affected by the Russian invasion of Ukraine, we offered two years of complimentary EASL membership and online access to EASL events to clinicians and researchers from Ukraine.

Thank you to our members for their commitment and trust.

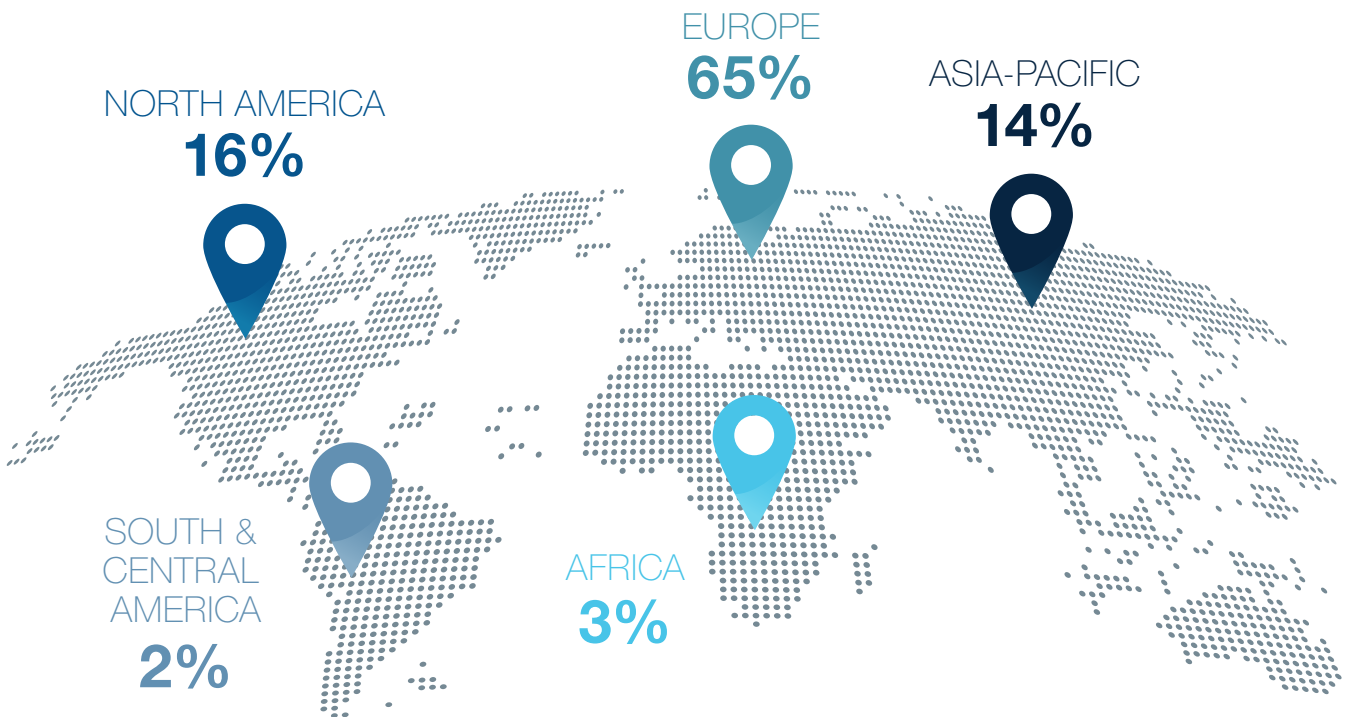
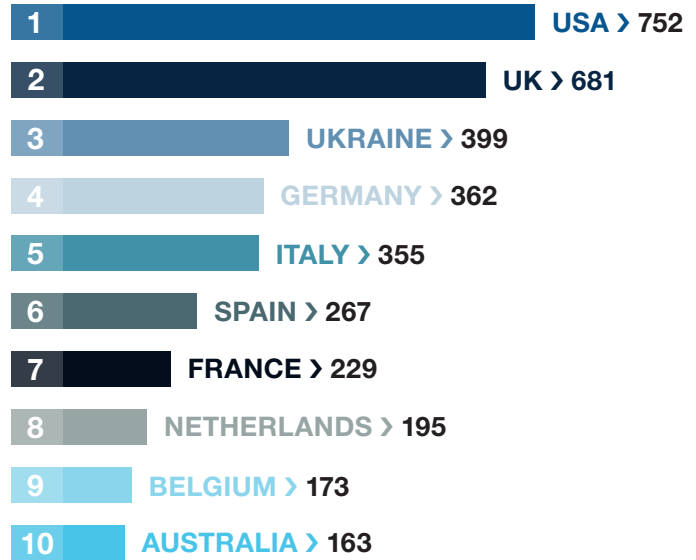


**112**  
countries

**5,900**  
members

**34**  
national  
associations

## TOP 10 COUNTRIES



# EASL AWARDS

## EASL Recognition Awards 2022

Every year at our annual EASL meeting, EASL acknowledges major scientific contributions made by scientists in the field of liver research.

The EASL Governing Board selects nominees and the recipients receive their awards in the presence of the liver community, during the annual EASL meeting.



Pere Ginès  
Spain



Patrick Kamath  
USA



Sophie Lotersztajn  
France

## EASL Emerging Leader Awards 2022

The EASL Emerging Leader Award is a yearly award specifically dedicated to young fellows, up to 40 years of age, who are active members of EASL. Every year, two Young Investigator Awardees are elected, based on their international liver research achievements to date.



María Jesús Perugorria  
Spain



Salvatore Piano  
Italy

### EASL Innovation Award 2022

The newly created “EASL Innovation Award” was presented during the International Liver Congress™ 2022 in London. This award recognises significant scientific contributions from healthcare professionals in the field of liver disease and conveys the gratitude of the society for their innovation. The inaugural award was presented to Martin Rössle for the invention of the transjugular intrahepatic portosystemic shunt (TIPS) technology.



Martin Rössle  
Germany

### EASL Rising Star Award 2022

The Nurses & AHPs Task Force wishes to provide a platform to showcase an emerging liver nurse or AHP whose focus is on putting people with, or at risk of, liver disease at the heart of practice. With this initiative, the task force recognises the many talented liver nurses and AHPs who contribute to service delivery, clinical excellence, leadership, audit, innovation, education, and research.



Catherine Wood  
United Kingdom

# FELLOWSHIPS AND RESEARCH SUPPORT

In 2022, EUR 700,000 were awarded in fellowships and grants.

- Providing scientists with opportunities through their careers
- Fostering the next generation of excellence in hepatology
- Opportunities to excel, advance, network, and become a key member of the vibrant global hepatology community provided to young talents
- Fellowships are for PhD or post-doctoral qualifications, short-term or longer-term goals

## EASL Daniel Alagille Award 2022

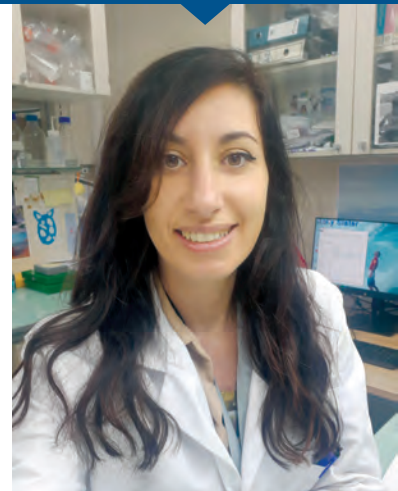


Pasquale Piccolo

## EASL Andrew K. Burroughs Short-Term Fellowship



Stefaan Verhulst

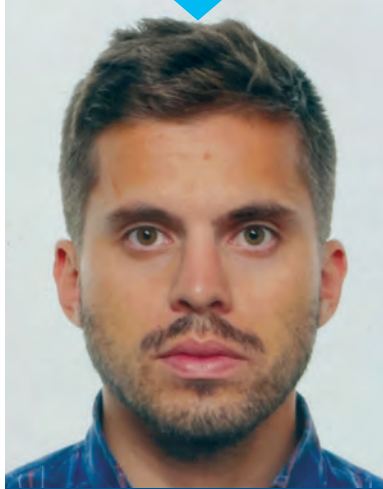


Laura Mosca

### EASL Juan Rodes PhD Studentship



Aashreya Ravichandra



Erwan Vo Quang

### EASL Sheila Sherlock Postgraduate Fellowship



Leticia Colyn Pedrero

### EASL Registry Grants 2022

As a major European association dedicated to pursuing excellence in liver research and to providing education to all those interested in hepatology, EASL promotes research and education through the sharing of research findings in hepatology.

Considering the difficulties faced by researchers in our field, the EASL Governing Board has decided to create the EASL Registry Data Collection Grant to provide funding in support of consortia groups dedicated to gathering data with a specific focus on liver disease.



Asgeir Johannessen  
*Hepatitis B in sub-Saharan Africa collaborative network (HEPSANET)*  
Norway



Salvatore Piano  
*International registry of acute kidney injury in cirrhosis: The GLOBAL AKI project*  
Italy



Jesús M. Bañales  
*European Cholangiocarcinoma Registry*  
Spain

# FINANCIAL REPORT

## Treasurer's Report

Dear members,

It is my honour to write this Treasurer's Report on EASL's 2022 financial accounts.

The year 2022 saw a partial return to in-person events after two heavily disrupted years due to the COVID-19 pandemic. We continued to deliver on our mission with a mix of online and in-person events and increased educational, policy and public health offerings.

The 2022 financial figures show an operating loss of 2,241,316 EUR. The primary factors behind this loss are a quite significant gap in paying registrations (hence revenues) from the International Liver Congress (ILC), a shortfall in the NAFLD Summit result, lower revenues than expected for JHEP Reports, and an increase in VAT costs.

Regarding the ILC 2022 final figures, as mentioned, the major shortfall came from a lower number of paying registrations than originally budgeted. In addition, we were confronted with significant increases in venue and exhibition rental costs. Although these costs were in part offset by rigorous expenses control, the final shortfall in the ILC 2022 result amounted nonetheless to approximately 1,400,000 EUR.

The result for non-cash and extraordinary items shows a further loss of 974,596 EUR. This is mostly explained by

unrealised losses on our investments (bonds and a minor part of stocks), provisions on outstanding invoices (which we trust to recoup in 2023), and currency exchange fluctuations.

One will note that EASL's total liabilities and reserve funds decreased in 2022. This is explained by three principal reasons: the repayment of mortgage loan, the aforementioned operational loss, and the unrealised losses on investments.

The 2022 financial accounts were audited by A. Gautier Société Fiduciaire, an external audit firm. The auditors confirmed that EASL's accounts were in good order and properly reflected the financial status of the association.

In December 2022, during the Extraordinary General Assembly, the EASL members approved a break-even budget for the financial year 2023. This outlook will largely depend on the financial result of the EASL Congress 2023, and especially the number of paying delegates.

The EASL Liver Cancer Summit 2023 and the monothematic conference on Biliary Fibrosis have both performed well, but the EASL NAFLD Summit 2023 still lies ahead of us.

Beyond events, EASL is reinforcing its multichannel engagement focusing on increased support from healthcare industry partners for our educational, policy and

public health portfolios, including EASL Campus, EASL Studio, and policy and public health activities such as the EASL Policy Dialogues and EASL Policy Statements. To further strengthen our relationship and our ability to generate revenues for EASL, we invested in our Business Development team, leading to an overall increase in salaries for the EASL Office. Finally, we have also factored in a 2% increase in our expenses due to inflation.

I express my gratitude to the entire EASL Office for their tireless efforts to serve and support the EASL community.



**TREASURER**  
Francesco Negro

## Auditor's Report



Report of the statutory auditors  
on the limited statutory examination  
to the general meeting of

**European Association for the Study of the Liver (EASL), Geneva**

As statutory auditors, we have examined the financial statements (balance sheet, income statement and notes) of European Association for the Study of the Liver (EASL), Geneva for the year ended 31 December 2022.

These financial statements are the responsibility of the Board. Our responsibility is to perform a limited statutory examination on these financial statements. We confirm that we meet the licensing and independence requirements as stipulated by Swiss law.

We conducted our examination in accordance with the Swiss Standard on the Limited Statutory Examination. This standard requires that we plan and perform a limited statutory examination to identify material misstatements in the financial statements. A limited statutory examination consists primarily of inquiries of entity's personnel and analytical procedures as well as detailed tests of entity's documents as considered necessary in the circumstances. However, the testing of the operational processes and the internal control system, as well as inquiries and further testing procedures to detect fraud or other legal violations, are not within the scope of this examination.

Based on our limited statutory examination, nothing has come to our attention that causes us to believe that the financial statements and the proposed appropriation of available earnings do not comply with Swiss law and the entity's articles of incorporation.

Antoine Gautier,  
Licensed Audit Expert Nr 100651  
(Auditor in charge)

Alan Bonvin  
Licensed Audit Expert Nr 112904

Geneva, May 23, 2023  
AG/mj EASL\_ROR-22 - 12 ex.

Enclosures : - Financial statements (balance sheet total EUR 10.785.857, income statement, and notes)



## 2022 financial statements

### Balance Sheet, as of 31<sup>st</sup> December

	2022 EUR	2021 EUR
Cash and cash equivalents	1,758,251	3,540,978
Accounts receivables and other receivables	684,363	1,206,478
Prepaid expenses and accrued income	978,039	2,647,810
<b>Total Current Assets</b>	<b>3,420,654</b>	<b>7,395,266</b>
Financial assets	3,499,877	5,148,927
Investments	0	0
Tangible fixed assets	3,865,326	4,116,462
Intangible fixed assets	0	0
<b>Total Fixed Assets</b>	<b>7,365,203</b>	<b>9,265,389</b>
<b>Total Assets</b>	<b>10,785,857</b>	<b>16,660,654</b>
Accounts payable	1,149,271	374,606
Other short-term liabilities	37,325	183,252
Deferred income and accrued expenses	761,279	2,167,684
<b>Total Current Liabilities</b>	<b>1,947,876</b>	<b>2,725,541</b>
Mortgage loan	0	2,063,513
Long-term provisions	783,698	783,698
<b>Total Long-term Liabilities</b>	<b>783,698</b>	<b>2,847,211</b>
Unused restricted fund	282,400	127,107
<b>Total Allocated Funds</b>	<b>282,400</b>	<b>127,107</b>
Voluntary retained earnings	5,960,795	6,210,802
Reserve fund	5,000,000	5,000,000
Profit/Loss for the period	-3,188,912	-250,007
<b>Total Equity</b>	<b>7,771,883</b>	<b>10,960,795</b>
<b>Total Liabilities and Reserve Funds</b>	<b>10,785,857</b>	<b>16,660,654</b>

## Profit and loss account

	2022 EUR	2021 EUR
<b>Operating income</b>		
Revenue from activities	10,595,725	7,402,765
Revenue from restricted funds	230,473	449,141
<b>Total Operating Income</b>	<b>10,826,198</b>	<b>7,851,906</b>
<b>Operating expenses</b>		
Personnel expenses	-3,607,125	-3,122,635
Other operating expenses	-9,209,253	-4,636,422
Depreciation and value adjustments on fixed assets	-251,136	-264,413
<b>Total Operating expenses</b>	<b>-13,067,514</b>	<b>-8,023,470</b>
<b>Operating result</b>	<b>-2,241,316</b>	<b>-171,563</b>
<b>Financial income and expenses</b>		
Interest expenses	-44,379	-42,408
Interest income	117,914	149,013
Other financial expenses	-554,415	-82,464
Foreign exchange result	-160,629	-128,094
<b>Total Financial income and expenses</b>	<b>-641,509</b>	<b>-103,953</b>
<b>Result from ordinary activities</b>	<b>-2,882,825</b>	<b>-275,517</b>
<b>Extraordinary, non-recurring or prior-period income and expenses</b>		
Non operating income and expenses	0	-412,155
Exceptional, unique or off/prior period income and expenses	-150,795	423,115
<b>Total Extraordinary</b>	<b>-150,795</b>	<b>10,960</b>
<b>Net Result before changes in funds</b>	<b>-3,033,619</b>	<b>-264,557</b>
<b>Changes in funds</b>		
Allocation of Funds	-155,292	-39,390
Use of Funds	0	53,940
Other Allocations	0	0
<b>Total changes in Funds</b>	<b>-155,292</b>	<b>14,550</b>
<b>Net Result after changes in funds</b>	<b>-3,188,912</b>	<b>-250,007</b>

## Profit and loss account detailed

	2022 EUR	2021 EUR
International Liver Congress	7,501,627	5,080,890
Membership	709,941	616,695
Journal of Hepatology	1,125,841	1,196,713
Sponsors – (un)restricted funds	230,473	538,531
Net Building Revenue	13,066	14,029
Small Conferences	1,279,131	405,923
Other revenues	-33,882	-875
<b>Total Operating income</b>	<b>10,826,198</b>	<b>7,851,906</b>
International Liver Congress	-5,864,676	-1,289,130
Liver Cancer Summit	-102,711	-119,643
NAFLD Summit	-378,503	-91,223
Small Conferences (Monothematic/Special conf.)	-137,489	-263,509
Education and Scientific Activities	-380,998	-512,063
Marketing and Communication	-181,729	-61,729
Memberships, Fellowships and Registry Grants	-547,502	-1,058,012
Journal of Hepatology	-590,237	-460,404
EU Advocacy/Policy and Public Affairs	-216,078	-84,586
GB Meetings and Honorarium	-373,771	-214,400
IT related projects	-268,262	-271,015
Overheads	-70,873	-30,267
Legal, Consultancy, and Audit Fees	-51,955	-87,425
Other expenses	-44,469	-93,017
<b>Total Operating expenses</b>	<b>-9,209,253</b>	<b>-4,636,422</b>
<b>Personnel expenses</b>	<b>-3,607,125</b>	<b>-3,122,635</b>
<b>Depreciation and value adjustments on fixed assets</b>	<b>-251,136</b>	<b>-264,413</b>
<b>Operating result</b>	<b>-2,241,316</b>	<b>-171,563</b>
Financial income	117,062	99,717
Financial expenses	-48,589	-46,390
Interest of mortgage	-44,379	-42,408
Unrealized Financial Gain on Bonds	-4,890	49,296
Unrealized Financial Loss on Bonds	-500,423	-36,073
Foreign Exchange Gain	-160,291	-128,094
<b>Total Financial income and expenses</b>	<b>-641,509</b>	<b>-103,953</b>
Extraordinary income and expenses	-150,795	10,960
<b>Net Result before changes in funds</b>	<b>-3,033,619</b>	<b>-264,557</b>
Changes in Funds	-155,292	14,550
<b>Net Result after changes in funds</b>	<b>-3,188,912</b>	<b>-250,007</b>

## Notes to the 2022 financial statements

### General principles

#### Accounting principles applied in the preparation of the financial statements

These financial statements have been prepared in accordance with the provisions of commercial accounting as set out in the Swiss Code of Obligations (Art. 957 to 963b CO, effective since 1 January 2013). Significant balance sheet items are accounted for as follows:

#### Accounts receivable

Accounts receivable are amounts due from parties for services performed in the ordinary course of business. If collection is expected in one year or less (or in the normal operating cycle of the business if longer), they are classified as current assets.

These receivables are valued at their nominal values. Credit default risks are accounted for by specific and general allowances. General allowances are recognised for items that have not yet been considered with a specific allowance. The general allowance is based on the assumption that the default risk increases as the debt becomes increasingly overdue.

#### Recognition of revenue

The main revenue stream of EASL is the events sponsorship by industries and the event registration fees, mostly from the International Liver Congress (the main event). EASL generates other revenues from scientific publications and the association membership fees.

Membership fees are recognised in the accounting period in which the fees relate to.

ILC revenue is mainly composed of fees received from participants and sponsors and recognised based on the contract specifications when the following conditions are all met:

- the amounts can be measured reliably,
- it is probable that the Association will receive future economic benefits.

#### Non-current assets and leases

Property, plant, and equipment are valued at purchase cost, less any depreciation required by generally accepted accounting principles. Depreciation is charged on a straight line basis over the useful life of the fixed asset. The assets' residual values and useful lives are reviewed, and adjusted if appropriate, at the end of each reporting period.

Gains and losses on disposals are determined by comparing the proceeds with the carrying amount and are recognised in the income statement.

#### The useful lives of assets have been determined as follows:

Type of assets	Useful life
Building	30 years
Furniture, Fixtures and Equipment	10 years
Computer & Hardware	3 years
Intangible Assets	3 years

#### Foreign currencies

Items included in the financial statements were measured using the currency of the primary economic environment in which the Association operates ("the functional currency"), which is Euro ("EUR").

Monetary and non-monetary items in Swiss Francs are translated into Euros at the following exchange rates:

Foreign currency		Profit and loss statement	Balance sheet
2022	EUR/CHF	1.0241	1.0127
2021	EUR/CHF	1.0824	1.0810
2020	EUR/CHF	1.0824	1.0816
2019	EUR/CHF	1.1276	1.0870

The exchange rates used for balance sheet items are the rates prevailing on December 31; the exchange rates used for transactions conducted during the course of the year and for items in the profit and loss statement are average rates for the financial year.

For reasons of simplification, from 2019 onwards and in accordance with Swiss law, the Financial Statements are reflected in EUR only.

### Details, analyses, and explanations to the financial statements

The European Association for the Study of the Liver (“EASL”) is an Association registered in Geneva (2018), previously in Zurich (2017), Switzerland. The number of full-time equivalents did not exceed 50 on an annual average basis.

The presentation has been slightly changed versus previous version and comparative numbers have been modified in accordance.

### Receivables and liabilities

Receivables and liabilities towards direct or indirect participants and management bodies and entities in which there is a direct or indirect participation must in each case be shown separately on the balance sheet or in the notes to the financial statements (art. 959a para. 4 CO). This only applies if these items are not presented in the balance sheet as suggested.

### Mortgage schedules

Commitments on the building – Rue Daubin 7:

- n° 10527 of 30.09.2008 for CHF 2,100,000 – First Row
- n° 10527 of 30.09.2008 for CHF 1,500,000 – Second Row
- n° 2013-752 of 030.12.2012 for CHF 200,000 – Third Row

### Pension liabilities

On 31 December 2022, none, as payments were done on time without issues

On 31 December 2021, none, as payments were done on time without issues

On 31 December 2020, it amounted to EUR 134,163 (CHF 145,104)

### Collateral for third-party liabilities

	2022 EUR	2021 EUR	2020 EUR
Guarantee obligations	73,000	69,000	69,000

### Total amount resulting from the dissolution of replacement reserves and the material dissolution of excess hidden reserves

No hidden reserves were released in the year under review.

### Significant events occurring after the balance sheet date

non-existent

### Significant events occurring during the reporting year

The recovery of normal activities, especially face to face events, following the Covid19 did not reached budget assumptions, specifically concerning paid registration.

The bond market collapse of 2022 has not been anticipated at that level, generating an unrealized loss on investment of EUR 400 K.

### Fees paid and accrued to the auditor

	2022 EUR	2021 EUR	2020 EUR
Audit services	25,105	23,420	23,023

# OUR PARTNERS & SPONSORS

## Our Partners



**Our Sponsors**

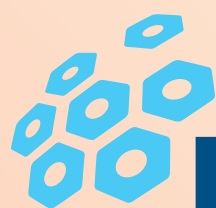








# Let's unite Hepatology



**EASL**™ The Home of  
Hepatology

BECOME  
A MEMBER



EASL Office

Home of Hepatology

7 rue Daubin

1203 Geneva

Switzerland

+41 (0) 22 807 03 60

[easloffice@easloffice.eu](mailto:easloffice@easloffice.eu)

[www.easl.eu](http://www.easl.eu)



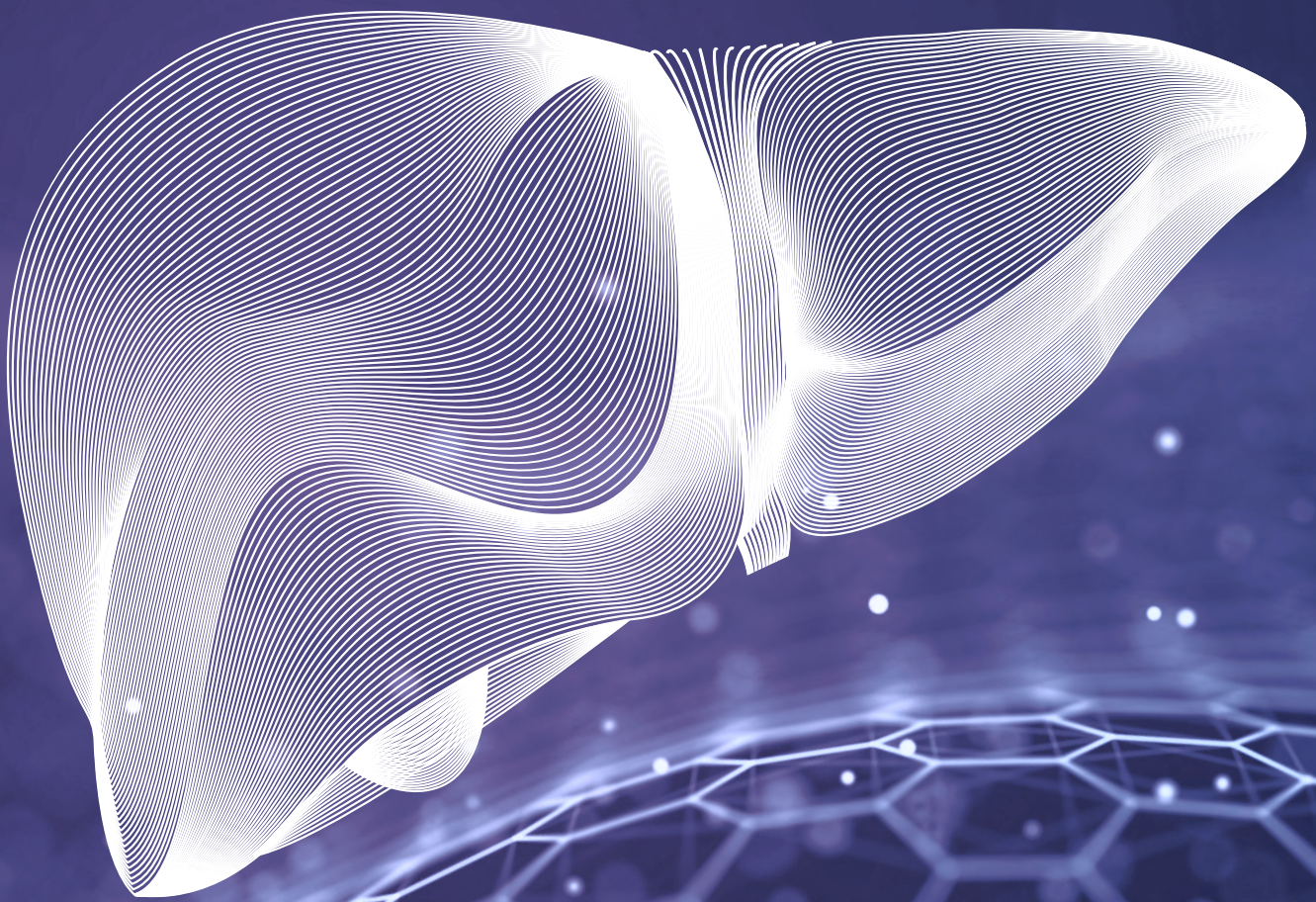
**EASL**

CONGRESS

Milan, Italy  
5-8 June

2024

The International Liver Congress™



Save the date

#EASLCongress

• [easlcongress.eu](http://easlcongress.eu)