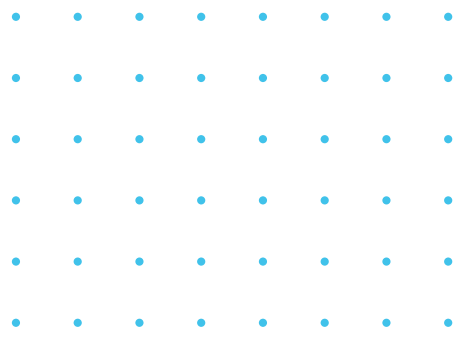




ANNUAL REPORT 2019





WHO WE ARE

EASL is a medical association dedicated to pursuing excellence in liver research, in clinical practice of liver disorders, and in providing best-in-class education to all those interested in hepatology.

While the roots of the association were established in Europe in 1966, EASL engages with global stakeholders with an interest in the liver to facilitate the spread of knowledge and expertise in best practice and the latest scientific breakthroughs in hepatology.

OUR MISSION

We aim to help everyone involved in treating liver disease to realise their full potential to cure and prevent it. The mission of the European Association for the Study of the Liver is to be the Home of Hepatology so that all who are involved with treating liver disease can realise their full potential to cure and prevent it.

OUR PURPOSE

We promote communication among professionals in Europe and beyond, interested in the liver and its disorders, particularly:

- Promoting liver research
- Promoting education of physicians, scientists, allied health professionals, and other medical professionals, and public awareness of liver diseases and their management
- Acting as advisor to European and national health authorities concerning liver diseases, the provision of clinical services, and the need for research funding
- Fostering European multicentre controlled trials
- Facilitating scientific exchange
- Enabling Young Investigators to actively participate at EASL meetings

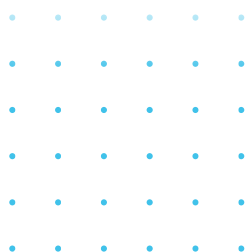


TABLE OF CONTENTS

1. Message from the Secretary General and Vice-Secretary	2
2. 2019 highlights	6
3. Faces at EASL	8
4. EASL Office	12
5. Celebrating achievements	13
6. Tributes	14
7. Enhancing our digital presence	15
8. Growing our community	16
9. Advancing science and education	17
10. Fellowships and Research Support	24
11. Impact in advocacy	28
12. Financial overview	32
13. Message from the Managing Director	38
14. Acknowledgements	40

MESSAGE FROM THE SECRETARY GENERAL AND VICE-SECRETARY

Looking back at 2019, we are proud of the many efforts that have contributed to EASL's strategic directions of education, science, and advocacy. It is through the diversity and breadth of EASL's membership, liver disease expert engagement, and vibrant European and international partnerships that EASL continues to make significant steps to achieving our goals.

Advancing education

Our flagship event, the International Liver Congress™ (ILC) saw its 54th year in Vienna and convened 8,500 clinicians, scientists, hepatologists, and nurses from around the world.

ILC 2019 attracted almost 2,500 abstract submissions, of which 70% were accepted by our expert committee for presentation. The programme was divided into six topic tracks to ensure it met the specific interests of all our delegates.

With the American Association for the Study of Liver Diseases (AASLD), we also co-organised the HCV Conference in Miami. The goal of the conference was to promote the global elimination of hepatitis C (HCV) by enabling world experts to share knowledge, identify major public health challenges, and formulate effective steps towards its eradication.

In February, we ran the annual HCC Conference, this time in Lisbon. The latest research and techniques were presented on the management of hepatocellular carcinoma (HCC), a disease

which accounts for 85–90% of all primary liver cancers.

Increasingly, non-alcohol related fatty liver disease (NAFLD) is the leading cause of chronic liver disease, not only in Western countries. Our NAFLD Summit in Seville convened stakeholders to share research about the disease and to learn from peers.

EASL's peer-reviewed *Journal of Hepatology* continues to flourish. Its record-breaking impact factor rating of 18.946 makes it the top-ranking hepatology journal worldwide.

This year also saw the launch of *JHEP Reports*, a new open-access journal. Both publications remain committed to quality, rigour, and integrity.

In 2019, we also launched an improved website, together with a new optimised EASL memberzone. Another important digital development was the launch of EASL's multidisciplinary eLearning hub, EASL Campus, with more than 2,000 learning materials. The materials are tailored to an individual's job function and specialism, so providing the best and most relevant liver-related education.

Promoting world-class science

EASL is the communication and dissemination arm for three major EU-funded projects for diagnosing and combating liver disease: ALIVER, LITMUS, and MICROB-PREDICT.

At the end of 2019, we received confirmation that two further liver disease related projects had been successful in their grant applications: DECISION and LiverScreen.

February 2019 saw the launch of MICROB-PREDICT. This Horizon 2020-financed project, involving 22 world-leading specialists, clinical experts, and patient organisations, is investigating the role that the microbiome plays in the development and severity of decompensated cirrhosis and acute-on-chronic liver failure.

Meanwhile, the LITMUS project, which began in November 2017, increased its number of participant partners from 47 to 53 in 2019. LITMUS is made up of diverse clinical scientists, working towards developing, validating, and qualifying better non-invasive biomarkers for testing for NAFLD.

The ALIVER Consortium of 11 institutions from seven European countries has developed an innovative liver dialysis machine called DIALIVE that helps the liver to naturally regenerate. Following a €6.4 million EU Horizon 2020 grant in 2017, the consortium has been developing the DIALIVE device, created a 24-patient study and has begun to apply data analytics to identify new biomarkers that could help to optimise treatment protocols.

Increasing the impact of advocacy

Advocating for the highest standards of hepatology care for patients is central to EASL. At ILC 2019, EASL and the EASL International Liver Foundation convened several like-minded patient and civil society organisations to promote more fruitful exchange.

As in previous years, EASL has continued to work closely with the Alliance for Biomedical Research (BioMed Alliance) as the European Commission moves closer to the launch of Horizon Europe, the new funding programme which will run from 2021 to 2027.

The EASL–Lancet Commission was established and tasked with both quantifying the burden of liver disease in Europe and addressing optimal diagnosis and standards of care for these patients.

Joining forces with other international liver associations at The Liver Meeting® 2019, we urgently called for governments to combat HCV.

Releasing new policy statements

Five new policy statements were unveiled at ILC. They focussed on food, obesity and NAFLD, hepatitis C elimination, liver disease and migrant health, screening of blood donations for hepatitis E, and alcohol related liver disease (ALD). The policy statements highlight measures policymakers can take.

EASL also collaborated with the European Alcohol Policy Alliance (Eurocare), United European Gastroenterology (UEG), and The Standing Committee of European Doctors (CPME) to call attention to the need for detailed, government-monitored alcohol labelling to become a Europe-wide regulation.

Promoting equality, diversion, and inclusion

As an organisation, we have always aimed to promote excellence in liver research, in clinical practice, and in education to *all people interested* in hepatology. Launching EASL's policy on equality, diversity, and inclusion places these values firmly at the heart of all that we do.

2020 – the year ahead

Moving forward, EASL remains clear in its mission to deliver the best of science in liver disease, during these unprecedented times. Our community is experiencing greater medical and economical challenges, and we are all adapting our work and research to respond to the COVID-19 public health crisis. EASL is committed to maintaining excellence in liver disease and continued scientific exchange and learning, and is adapting swiftly to the new situation.

My sincere gratitude goes to our colleagues, including nurses, doctors, other health professionals, and key workers for their dedication, hard work, and flexibility during the last months.

One of the challenges that EASL has faced in 2020 relates to the delivery of a safe International Liver Congress. Having considered the different options carefully, we believe it is important for the liver community to connect and to share the latest in data, education, and science. We have therefore decided to transition the onsite ILC 2020 to an innovative digital event, The Digital International Liver Congress™, taking place online 27–29 August 2020.

“ Equality, diversity, and inclusion remain crucial to us making progress in liver research, medicine, and education. ”

Prof. Philip NEWSOME, EASL Secretary General

This new format will bring cutting-edge content and extensive interactivity throughout.

Notably, EASL has been livestreaming all sessions at its events since 2019 and has been providing educational content online through the EASL Campus. This experience of delivering online content to the liver community gives us the platform to go up to the next level at The Digital International Liver Congress™ 2020.

Other EASL events too have been postponed to 2021 including the NAFLD Summit that was scheduled to take place in September 2020. The NAFLD Summit is being moved to

16-18 September 2021 in Dublin. The latest research and discussions around NAFLD will of course be featured at The Digital International Liver Congress™, 27-29 August 2020. Only by boosting awareness about NAFLD widely, among healthcare professionals, policymakers, the public, and patients, will we find solutions to address it.

The EASL schools that were scheduled to take place this summer will too be postponed to the same period next summer.

Throughout this time, we thank you for your continuing support and we look forward to working together to continue our route into the future.

**Prof. Thomas BERG,
Vice-Secretary**

Head of the Division of Hepatology, Department of Medicine II, Leipzig University Medical Center, Germany

**Prof. Philip NEWSOME,
Secretary General**

Director of the Centre for Liver and Gastrointestinal Research & Professor of Hepatology, University of Birmingham, and Consultant Hepatologist at the Liver Unit, Queen Elizabeth Hospital, Birmingham, UK



Left:
**SECRETARY
GENERAL**
Prof. Philip NEWSOME

Right:
VICE-SECRETARY
Prof. Thomas BERG



ADVOCACY

together

The East of Scotland
Health Foundation
is a global, independent
charitable organisation
committed to improving
the health of all
and increasing
productive capability
for the greatest
benefit of people
in improved lives health

Please visit
www.east-ill.org
to learn more about our activities
and how you can support them.

gro.hi

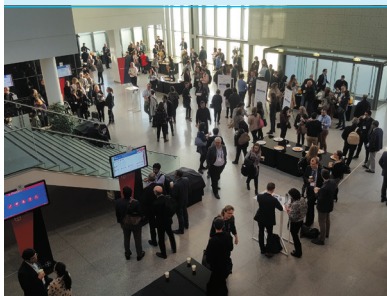


2019 HIGHLIGHTS



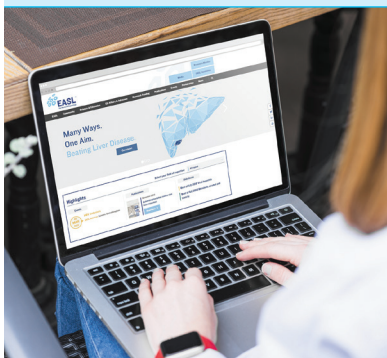
JANUARY

- › First year of 2 new membership categories: patients and patient representatives; allied health professionals (AHPs)
- › Launch of MICROB-PREDICT project



FEBRUARY

- › HCV Special Conference, *Miami, USA*
- › HCC Summit 2019, *Lisbon, Portugal*



MARCH

- › New EASL website



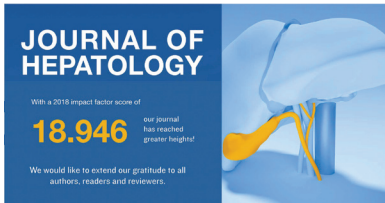
APRIL

- › ILC 2019 *Vienna, Austria*
- › 8,500 clinicians, scientists, and hepatologists from 117 countries
- › 2,500 abstract submissions
- › Election of new Governing Board and Committee members
- › New *Journal of Hepatology* Editor-in-Chief, Prof. Paolo ANGELI
- › Launch of EASL policy statements



MAY

- › First edition of *JHEP Reports*



JUNE

- › *Journal of Hepatology* becomes top-ranked liver disease publication worldwide, with an impact factor of 18.946



JULY

- › Governing Board appoints Ben HAINSWORTH as Managing Director
- › Start of EASL brand refresh

AUGUST

- › 6 new members join LITMUS project
- › Newsletters refresh



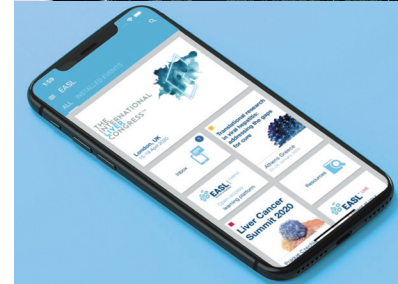
SEPTEMBER

- › Lancet-EASL Commission survey on the care of liver cancer patients in Europe
- › Launch of new equality, diversity, and inclusion policy statement
- › NAFLD Summit 2019, Seville, Spain



OCTOBER

- › EASL EU Policy Councillor, Prof. Helena CORTEZ-PINTO elected 1st female Vice-President of United European Gastroenterology
- › Call for action: Right to know alcohol labelling
- › Launch of 12-month rolling membership and new EASL memberzone



NOVEMBER

- › Call for action from global hepatology societies for “Better HCV Screening and access to treatment”, Boston, USA
- › New EASL app



DECEMBER

- › Launch of EASL Campus: an open-access eLearning hub for hepatology and liver-related disease
- › EASL postgraduate course available in Chinese, Japanese, Portuguese, and Spanish

FACES AT EASL

EASL's longstanding heritage dates to 23 April 1966 in Marburg, Germany, when it was founded by Prof. Gustav-Adolf MARTINI. His intention was to strengthen international knowledge and cooperation in the field of liver disease and research.

Today, EASL's growing success comes from the diversity and professionalism of our people, whether they are in the Governing Board, our committees and task forces, or the team at the EASL Office.



Back row, left to right: Prof. Markus CORNBERG, Prof. Thomas BERG, Prof. Philip NEWSOME, Prof. Ulrich BEUERS, Dr Emmanuel TSOCHATZIS, Dr Emma ANDERSSON

Front row, left to right: Prof. Francesco NEGRO, Prof. Maria BUTI, Prof. Pierre-Emmanuel RAUTOU, Prof. Maria REIG, Prof. Helena CORTEZ-PINTO

Governance

Governing Board

The EASL General Assembly, which took place in April during the International Liver Congress™ (ILC) 2019, saw the election of new members to the EASL Governing Board, notably EASL's new Secretary General, Prof. Philip NEWSOME from the United Kingdom.

All members of the Governing Board are already in some way actively engaged and involved in the field of hepatology, and among them, carry out the following duties:

- 1) To manage the business of the association
- 2) To carry out the resolutions taken at the General Assembly
- 3) To represent the association. The Secretary General has joint signatory power together with the Treasurer or any other person entrusted with the management and representation by the Governing Board
- 4) To attend to all matters which are not delegated to or reserved for another functional body of the association pursuant to the law or the Articles of Association

- 5) To accept new Ordinary Members, Corresponding Members, and Trainee Members
- 6) In case of considerable financial gains, the Governing Board prepares proposals for approval at the General Assembly for the destination of parts of these gains. These destinations should serve purposes that are in agreement with the aims of the association
- 7) To prepare proposals for alterations of the Articles of Association if necessary
- 8) To decide about matters concerning the EASL membership fee
- 9) To select and propose to the General Assembly the name of the Editor-in-Chief of the *Journal of Hepatology* and of *JHEP Reports*.

Ethics Committee

The Ethics Committee consists of five members who operate independently from the Governing Board. Their role is to eliminate the potential for real or perceived bias in EASL's Clinical Practice Guidelines by reviewing members of the author panels, as proposed by the Governing Board.

Scientific Committee

The Scientific Committee consists of six members. Each member serves for a period of three years. In addition to their role in the Governing Board, the Scientific Committee members are responsible for building the scientific programme of ILC and other EASL events referring to original data from abstract submissions.

Educational Committee

The Committee comprises six members, at least two of whom represent non-hepatology specialities of relevance to EASL education. At any one point in time, one member of the committee must be below the age of 40 to represent the interests of Young Investigators.

Policy and Public Health Committee

The Committee is made up of four non-Governing Board members and one patient member representative. Each member serves for a period of three years and cannot be re-elected as EASL Policy and Public Health Committee (PPHC) members. This committee is chaired by the European Policy Councillor.



Left to right: Dr Salvatore PIANO, Dr Sabela LENS, Prof. Pierre-Emmanuel RAUTOU, Dr Espen MELUM, Dr Jean-Charles NAULT

Task Forces

The Task Forces exist to improve collaboration between basic and clinical scientists from a range of disciplines sharing common specialist interests.

Young Investigators

The Young Investigator (YI) Task Force advises the Governing Board on specific educational

initiatives for young hepatologists and organises different activities during ILC.

Its objectives are:

- To promote EASL activities for YIs
- To build an active and dynamic community of YIs involved in EASL activities

- To promote and facilitate discussion and exchange of information via EASL online forums and at EASL events
- To host an exclusive social networking event during ILC solely for YIs
- To encourage other YIs to become EASL members and join the EASL Community

“As a Young Investigator, attending ILC gives me the chance to divulge my project and to get new insightful perspectives on it. It is a huge opportunity – to listen to and meet the great names in hepatology.”

Inês MATEUS, Young Investigator

Nurses and allied health professionals

EASL recognises the role of nurses and allied health professionals (AHPs) in leading initiatives to improve education, standards, and ultimately the care for patients with liver disease.

The Task Force was set up to improve communication within the European nurse community and to advise the EASL Governing Board on topics of interest. AHPs were able to become members of the Task Force from 2018.

Its objectives are:

- To work collaboratively on the research and quality agenda, developing links with affiliated liver nursing forums, committees, and societies across Europe
- To develop programmes, including a Nurses and AHPs Forum at ILC

- To work jointly with the EASL office to have a sustainable membership programme for nurses and AHPs
- To collaborate in strengthening liver nursing across Europe with joint funding and links to ongoing medical projects
- To work together to raise and improve the experience of care, and to deliver a quality service to people with liver disease and their families that is measurable and transparent

EASL equality, diversity, and inclusion policy statement

Our goal is to pursue and facilitate excellence in liver research, clinical practice of liver disorders, and the provision of education to all those interested in hepatology.

This requires recognising and supporting that excellence regardless of a person's gender, ethnicity, nationality, disability, religion, sexual orientation, socio-economic background, or age.

EASL is therefore dedicated to equal opportunities and has zero tolerance for discrimination or harassment.

In order to strengthen and keep liver research, medicine, and education at the forefront, the EASL Governing Board has devised this policy statement to harness the power of diversity, to fully recognise merit in an unbiased manner, and support EASL members at all stages of their career.

The EASL equality, diversity, and inclusion policy encompasses both an internal policy, regulating governing board or consortia work, and an external policy governing conferences, workshops, and events.

“Our Task Force has made measurable and meaningful progress for nurses, notably: special membership, access to professional events, our own abstract category, a growing community, and increasing visibility.”

Michelle CLAYTON, Chair of EASL's Nurses and Allied Health Professionals Task Force

EASL OFFICE

EASL's headquarters are in Geneva, Switzerland where the association's projects and activities are coordinated and executed.

As of end-2019, EASL had a 25-strong team. We are led by EASL's Managing Director, Ben HAINSWORTH, who joined the organisation in September 2019 and who acts as the interface between the organisation's Governing Board and the EASL Office. He has worked for 25 years in the international medical association sector in France and Germany, and has a track record in organisational growth, association governance, business event management, fundraising, and innovation.

The EASL team cover a broad range of expertise from advocacy,

marketing and public relations, branding to event management, education, publishing, and finance.

In March, we launched a new website offering visitors more visually dynamic and interactive access to the latest news in liver research, guidelines, reports, scientific data, event information, and more. New features include improved navigation and security, faster page loading, Search Engine Optimisation, and GDPR compliancy.

In April, we launched our improved multidisciplinary eLearning platform, EASL Campus.

In 2019, the JHEP department and EASL team celebrated EASL's peer-reviewed *Journal of Hepatology* achieving a recordbreaking impact factor rating of 18.946, making it the top-ranking hepatology journal worldwide.

Through the year, our team organised numerous significant events: our flagship congress, two summits, three Schools, and one masterclass. In addition, two endpoint meetings were co-organised with the American Association for the Study of Liver Diseases (AASLD).



Ben HAINSWORTH



Sharon WALLIS



Sophie FUX



Caroline MULLER



Estelle BUREL



Jeremy MARRO



Wouter KRUIJS



Karen MAZZOLI



Andrei ȘTEFĂNESCU



Johnny AINSWORTH



Adonia DHANJAL



Estelle JOBSON



Yoanna NEDELICHEVA



Mounia HEDDAD-MASSON



Stephane DAZET



Claire CHOMBEAU



Celine SANTO



Alexis SCHWERY



Montse VALLS



Laudina ASOMANING



Joel WALICKI



Duncan ANDERSON



Rossana MIRABELLA



Pablo ECHEVERRIA



Jiyeong ADAMS



Patricia POCHELON



Janine GOURGEL



Rocío DAVIÑA NÚÑEZ



Cyriac COUVAS

CELEBRATING ACHIEVEMENTS

Prof. Jordi BRUIX receives AASLD 2019 achievement award



In November, EASL member and former Secretary General (2002–2003) Prof. Jordi BRUIX was honoured with the Distinguished Achievement Award at The Liver Meeting® 2019, in Boston.

The annual award, presented by the American Association for the Study of Liver Diseases (AASLD), recognises the continued scientific contribution that Prof. BRUIX has made to hepatology throughout his career.

As a principal investigator in the diagnosis and management of hepatocellular carcinoma (HCC), Prof. BRUIX developed a staging and treatment strategy that has been endorsed by several international scientific associations to guide management of patients with HCC. He has also authored over 300 original investigations (h-index: 102) that have changed liver cancer diagnosis, prognostic evaluation, and treatment. Another notable achievement of his career was the founding of the International Liver

Cancer Association (ILCA), an organisation devoted to liver cancer research and a further testament of his commitment to combating liver disease.

In 2016, EASL also acknowledged the professor's outstanding lifetime work by presenting him with its prestigious EASL Recognition Award.

Prof. Richard MOREAU, EASL– CLIF Consortium founding member, receives award



In October, the French Association for the Study of the Liver (AFEF) presented Prof. MOREAU with their "Prix spécial francophone pour l'Etude de l'Hypertension Portale", a special award in recognition of his study of portal hypertension.

Prof. MOREAU is a leading researcher in the field of cirrhosis and was among the founding members of the EASL–Chronic Liver Failure (CLIF) Consortium in 2009, a collaboration of 90 European centres dedicated to advancing research on cirrhosis.

Prof. MOREAU has also been a major contributor to the activities of EASL, including serving as an Associate Editor (2010–2014) and now as a Senior Editor for the *Journal of Hepatology*.

Prof. Helena CORTEZ-PINTO elected first female Vice-President of UEG



Prof. Helena CORTEZ-PINTO, who acted as EASL's EU Policy Councillor from 2016–2019, was elected as the first female Vice-President of United European Gastroenterology (UEG) in September this year.

Prof. CORTEZ-PINTO is a highly respected specialist in gastroenterology. She has dedicated her career to hepatology, raising awareness among policymakers on critical health topics such as labelling for alcohol and sugar-sweetened beverages (SSBs).

While at EASL, she was instrumental in driving EASL's HEPAHEALTH project report and for producing a new range of EASL policy statements.

TRIBUTES

We were saddened to hear of the deaths of a number of prominent EASL members this year.

Prof. Karl-Hermann MEYER ZUM BÜSCHENFELDE



EASL mourns the passing of Prof. MEYER ZUM BÜSCHENFELDE who passed away on 1 September 2019, shortly before his 90th birthday. He will be remembered as a pioneer in liver immunology and one of the most prominent clinician scientists and mentors within the international hepatology community.

“MzB”, as he was affectionately known as by colleagues and friends, discovered the liver specific protein LSP and established a number of significant research groups focussing on liver diseases. In 1985, he founded the German Association for the Study of the

Liver (GASL), and in 1989 became president of the German Society of Gastroenterology (DGVS).

His major contributions to hepatology and, in particular, to EASL were honoured by his appointment as Honorary President of the association in 2005.

Prof. Valerio NOBILI



The hepatology community lost one of its foremost clinician investigators. Prof. Valerio NOBILI was internationally renowned for his outstanding contribution to research in the clinical aspects of paediatric fatty liver disease. His premature passing at the age of just 52 is a tremendous loss for science, patients, and the hepatology community.

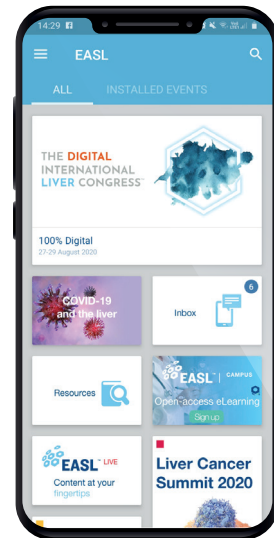
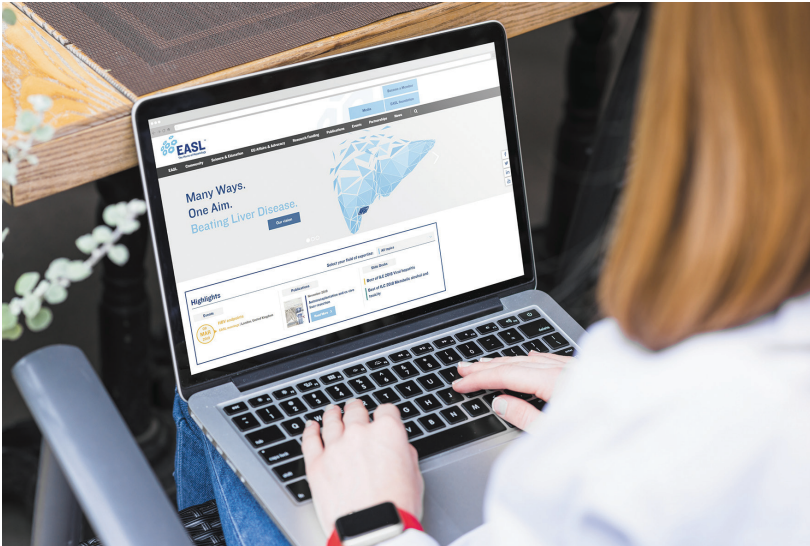
Prof. Valerio was passionate about finding a cure for paediatric liver diseases, and at the time of his death was coordinator of the European Paediatric Non-Alcoholic Fatty Liver Disease Registry (EU-PNAFLD), funded by EASL.

Prof. Fritz VON WEIZSÄCKER



EASL expresses deep sadness at the sudden passing of Prof. Fritz VON WEIZSÄCKER, who died on 19 November 2019 at the age of 59. Prof. VON WEIZSÄCKER was an expert in gastroenterology, hepatology, oncology, and infectiology at Schlosspark Clinic in Berlin. He was an active, engaged, and well-loved member of our community.

ENHANCING OUR DIGITAL PRESENCE



EASL website

In March, we launched a new website for the benefit of our community. Visitors can now enjoy more visually dynamic and interactive access to the latest news in liver research, guidelines, reports, scientific data, event information, and more. Improved navigation and security, faster page loading, Search Engine Optimisation, and GDPR compliancy are also among some of the new features.

EASL Campus

In April, we launched our improved multidisciplinary eLearning hub, EASL Campus, to enable all those involved in the liver field to increase their expertise in hepatology and liver-related disease. EASL Campus is ideal for clinicians, researchers, researchers in the field of liver disease, nurses, and allied health professionals (see page 20).

Brand refresh

July saw the start of new work to revamp and refresh the EASL brand and its flagship event, the International Liver Congress™ (ILC). We took an integrated approach to give a more outward-looking and human face to EASL, while maintaining the integrity of EASL's strong brand. The aim of this brand refresh is to nurture our community base while reaching out to new audiences.

Our newsletter refresh

In August, we conducted an audit of our newsletter and mailers and analysed their ability to deliver impactful information to our community. We made incremental updates to the overall design while also streamlining the content to make it more accessible and mobile-friendly to our audiences.

EASL app

In November, a new EASL app for mobile devices was created, making it easier for anyone in the hepatology community to be involved in our educational activities, whether by carrying out a training course through our eLearning platform, EASL Campus, or attending one of our multi-themed events.

The app provides basic event information, such as planned programmes of sessions and lists of speakers. It also gives users the opportunity to receive up-to-the-minute news direct from the event, to access EASL livestreaming, and to view lectures, discussions, and other sessions as they happen.

The app enables event delegates to “design their day”, creating their own schedules to make the most of their event attendance.

GROWING OUR COMMUNITY

Throughout the year, we made several improvements to our membership scheme and brought in changes to better meet the needs of our current and future members.



New member categories

In early 2019, EASL introduced new membership categories for patients and patient representatives, as well as allied health professionals (AHPs). Patients suffering from liver diseases are now part of the EASL community and their views strengthen the voice of hepatology. EASL recognises the importance of including patients in a separate membership category allowing easier access to EASL’s scientific and awareness activities.

New 12-month rolling membership

EASL members can now renew their membership throughout the year which gives our members more flexibility, allowing them to enjoy a full cycle of benefits. EASL membership is now valid for 12 months, from the day of your payment.

EASL memberzone

In October, we launched a new EASL memberzone, designed to improve the digital experience for members. The platform allows present and future members to

renew or create membership directly from the memberzone. It is now also possible to create profile information and choose what information is visible to other EASL members, to be listed in the members directory, and to search for other members.



ADVANCING SCIENCE AND EDUCATION

Events

The International Liver Congress™

Uniting the global liver disease community

In April, the 54th annual meeting of EASL, the International Liver Congress™ (ILC), took place in Vienna, bringing together over 8,500 clinicians, scientists, and hepatologists from 117 countries. The five-day event was a unique opportunity to find out about the latest clinical innovations in hepatology, to share recent data, present studies and findings, and to discuss the hottest topics in liver disease.

ILC 2019 continued to focus on excellence in cutting-edge research, with 246 original scientific presentations, 1,474 paper and electronic posters, of which numerous were emphasised during the poster tour and oral eposter sessions.

There was also plenty of opportunity for interaction and education at the three state-of-the-art lectures, grand rounds, skills learning centre, and brand new “Solve the case” and “Pros and cons” sessions. The 2,447 abstract submissions, with selected abstracts, were placed into six congress topic tracks. For the first time, a number of sessions were organised in a Hepatology Arena format, giving the audience more of an opportunity to interact with speakers and to be involved in discussions. This proved particularly popular with delegates.

Thanks to the work of our Governing Board over the last few years, we have seen an expansion of these six disciplines to deliver a comprehensive programme for all audiences, recognising the changing world of hepatology and the multidisciplinary nature of the sector.

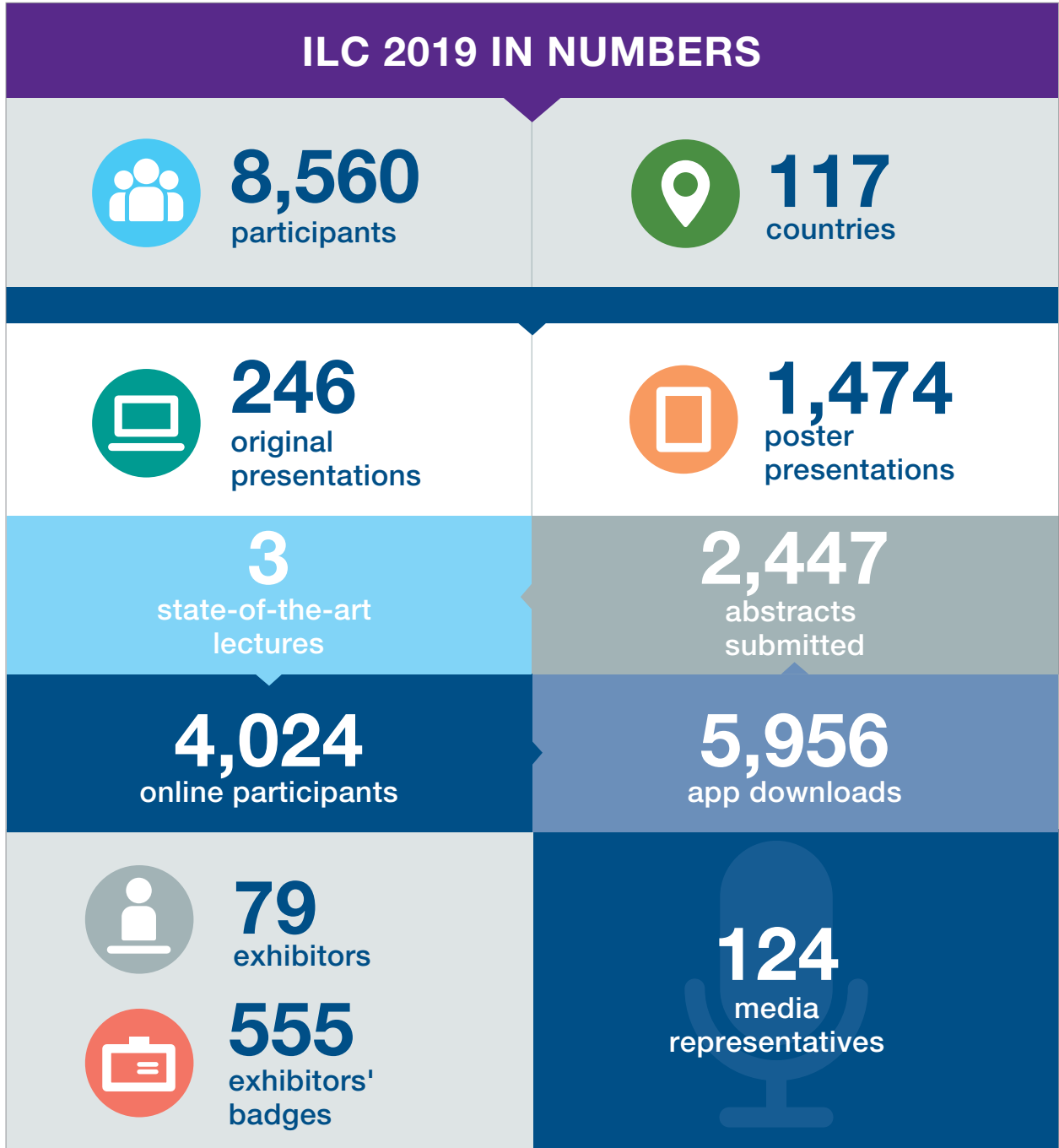
In 2019, all sessions were livestreamed and were also available every day via the congress app and website.

Releasing policy statements

Five new policy statements were unveiled at ILC and a wide array of public health sessions were organised. The policy statements focussed on food, obesity and non-alcohol related fatty liver disease (NAFLD), hepatitis C elimination, liver disease and migrant health, screening of blood donations for hepatitis E, and alcohol related liver disease (ALD).

EASL and the EASL International Liver Foundation (EILF) convened several like-minded patient and civil society organisations at a Patient Forum during ILC, which was the first of its kind, aimed at discussing how EASL and EILF could better interact with patient and civil society groups.





AASLD–EASL HCV Special Conference

Joining forces to eliminate hepatitis C (HCV) infection

In February, the AASLD–EASL HCV Special Conference brought together world experts in the hepatitis field to look at the major

obstacles to global elimination of HCV infection.

Delegates at the Miami-based conference looked at progress made to eradicate the disease so far and discussed what measures might be put in place to meet the goal of the World Health Organization (WHO) to eliminate hepatitis C virus (HCV) as a major public health threat by 2030.

Approximately 71 million people worldwide are chronically infected with HCV making it one of the world’s most common infectious diseases and public health threats. The epidemic continues to grow, with 1.75 million new infections annually. In 2016, the World Health Assembly – the forum through which the WHO is governed by 194 member states – initiated a worldwide goal for HCV elimination, defined as a

reduction in HCV related mortality by 65% and new incidences by 80% by 2030. Yet, according to the WHO, only 12 countries are on track to meet this goal.

HCC Summit 2019

Getting up to speed with the latest research and treatments for carcinoma

Delegates at the HCC Summit in Lisbon this year learnt about the most-up-date developments in hepatocellular carcinoma (HCC) and cholangiocarcinoma (CCA).

Following fundamental changes in our understanding of pathophysiology and clinical options in HCC and CCA, physicians and scientists are now facing a multitude of new treatment options, clinical trials, and new basic research concepts. While these developments offer many new opportunities for patients, it is becoming increasingly difficult to keep track and implement these changes into daily clinical practice and research projects in a timely manner.

The summit aimed to address this by gathering physicians and scientists together to exchange clinical knowledge, discuss controversial issues, and establish new collaborations. As of 2020, the summit will be renamed the Liver Cancer Summit and cover a broader range of relevant issues.

HBV endpoints

Evaluating therapies for curing hepatitis B (HBV) infection

Our HBV Endpoints workshop in March united academic, regulatory, and pharmaceutical (diagnostic and therapeutic) communities to discuss therapeutic endpoints, trial designs, appropriate patient

populations, and safety concerns with regards to novel therapeutic approaches for curing HBV.

The meeting defined what “HBV cure” means. It thus led to a discussion on the likelihood of it being achieved with currently approved therapies, as well as the strategies needed to evaluate combination therapies, efficiently and safely.

Findings from the workshop will be used to formulate guidance regarding potential pathways that will in turn affect regulatory approval of therapies, ultimately resulting in high rates of HBV cure in individuals with chronic hepatitis B and chronic hepatitis D.

NAFLD Summit 2019

Dealing with NAFLD: the next public health crisis

Non-alcohol related fatty liver disease (NAFLD) is the leading cause of chronic liver disease, not only in Western countries, but also among many other developed and developing countries. In the US and Europe, nearly 40% of the population have NAFLD and approximately 20% are likely to develop progressive liver disease that leads to liver fibrosis and cirrhosis.

Even though NAFLD is estimated to be costing European economies €35 billion a year,

effective diagnostic tools for identifying the disease are lacking and not enough is being done to promote healthy diets and to encourage physical activity for at-risk groups.

In September, 442 delegates from 46 countries convened at our NAFLD Summit in Seville, Spain, to discuss these issues and what might be suitable solutions to deal with this health crisis.

AASLD–EASL ALD endpoints

Exploring ways to better manage patients with alcohol related liver disease (ALD)

Leading experts in the field of ALD research and therapy explored the multiple aspects of managing patients at the joint ALD Endpoints Conference in Chicago in October. The Improving Outcomes in Alcohol-associated Liver Disease Through Robust Basic and Translational Research meeting was designed to bridge critical gaps in ALD diagnosis, management, and clinical trial design. Speakers presented evidence-based knowledge on potential triggers for ALD, the role of alcohol dependence on management programmes, the various stages of disease, gender differences, and potential biomarkers for diagnosis, disease severity, and prognosis.

“Only by boosting awareness about NAFLD widely, among healthcare professionals, policymakers, the public, and patients, will we find solutions to address it.”

Prof. Philip NEWSOME, EASL Secretary General

The programme also included practical guidance on ways to create effective multidisciplinary teams to manage ALD patients, so that hepatologists, addiction specialists, social workers, nurses, and a patient’s family members can work together as a team.

Schools and masterclass

Training the next generation of hepatologists

EASL’s Schools and masterclass are designed to give professionals – both new

generations of hepatologists and more experienced clinicians keen to update their knowledge – a snapshot of current developments in combating liver disease.

The Schools we ran this year focussed on: liver cell isolation and characterisation; modern dilemmas in liver transplantation; and metabolic inflammation, immunity, and liver disease.

We also collaborated with the American Association for the Study of Liver Diseases (AASLD) to run a masterclass, in December, in Amsterdam,

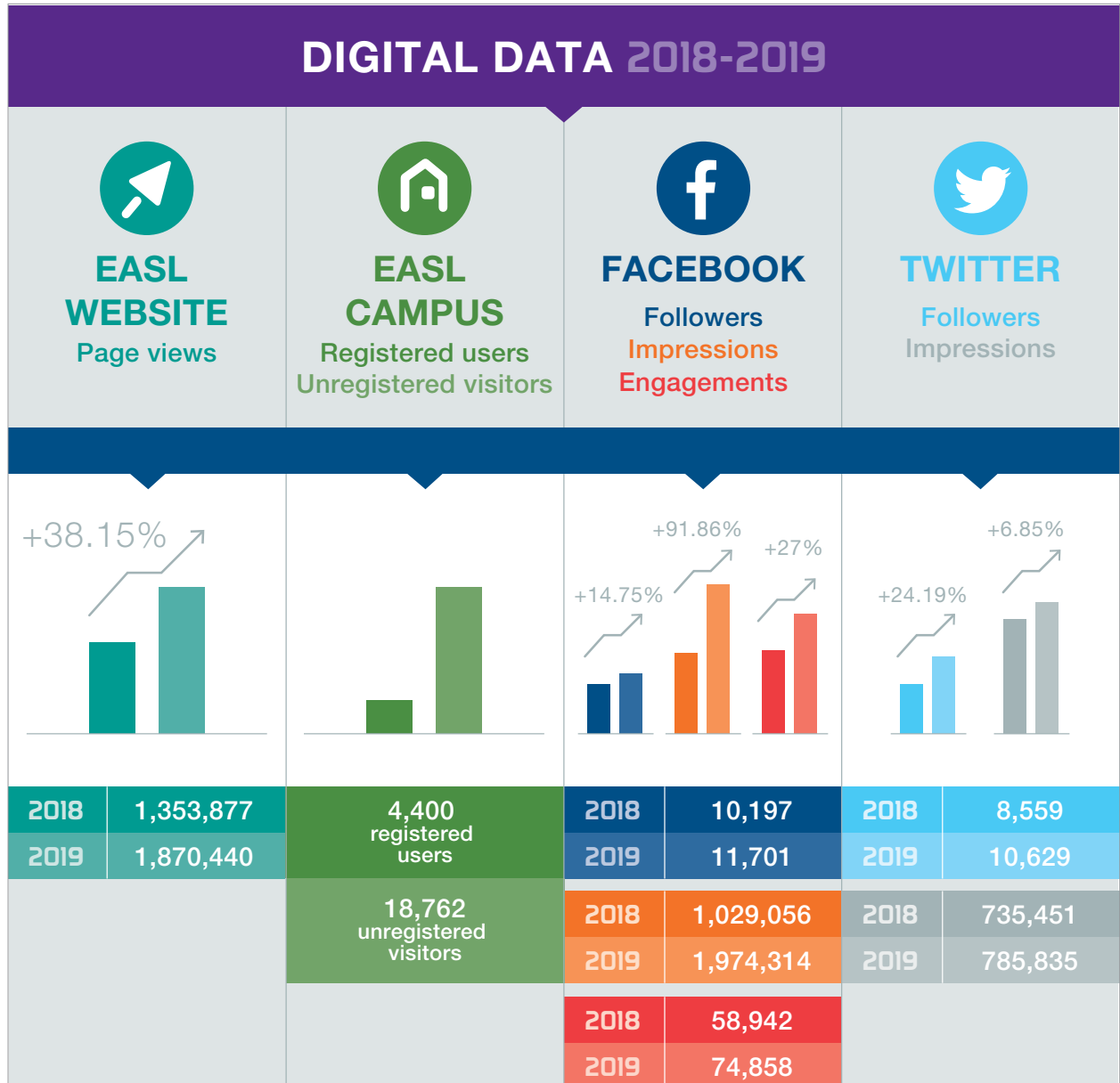
the Netherlands. It consisted of two days of lectures, interactive break-out sessions, individual meetings with tutors, abstract presentations, and a poster session. Social events held gave Young Investigators an opportunity to network with world leaders in hepatology.

eLearning

EASL Campus

Personalising online liver disease learning

In April, we launched our improved multidisciplinary



“EASL Campus, our open-access eLearning Hub, offers state-of-the-art courses and resources tailored to professionals in hepatology.” Prof. Ulrich BEUERS, EASL Educational Councillor-Elect

eLearning hub, EASL Campus, to enable all those involved in the liver field to increase their expertise in hepatology and liver-related disease. It is ideal for clinicians, researchers, researchers in the field of liver disease, nurses, and allied health professionals.

The platform offers a wide variety of open-access, state-of-the-art, interactive resources – all of which can be tailored to an individual’s specialism and job function. These digital learning materials are available on and offline, via a simple login, to give users the flexibility to study at a time and place that suits them.

EASL Campus materials include online courses, conference webcast libraries, eposters, and slide decks. These highly sought-after slide decks summarise Clinical Practice Guidelines and the Best of EASL’s congresses and summits.

Key categories are: General Hepatology; Immune Mediated and Cholestatic Diseases; Cirrhosis & Complications; Liver Tumours; Metabolism, Alcohol & Toxicity; and Viral Hepatitis.

Additionally, we offer a four-module course on the ultrasound

of the liver and a course on the management of the side effects of immune checkpoint inhibitors.

iLiver

iLiver is a free app with links to resources approved by independent expert reviewers and EASL Governing Board representatives. This interactive app is designed to deliver instant medical information and clinical recommendations to healthcare professionals around the world.

The updated app, which covers 26 areas of liver disease, can be accessed both on and offline, making it the ideal bedside reference tool for diagnosing and treating patients.

EASL HCV Advisor app

The EASL HCV Advisor app is a free tool provided to healthcare professionals treating patients with hepatitis C (HCV). The app streamlines the selection of treatment, based on the trusted EASL Recommendations for Treatment of Hepatitis C. Clinicians can simply enter the patient and virus information and then review straight away the appropriate treatment options made available.

Publications

Journal of Hepatology achieving an impact factor of 18.946



EASL’s monthly journal, the *Journal of Hepatology*, provides an international forum for the publication of original articles, reviews, and letters to the Editor, describing basic laboratory, translational, and clinical investigations in hepatology. All articles undergo a rigorous peer review process and are selected based on the originality of the findings, the superior quality of the work described, and the clarity of presentation.

“We are thrilled to see such an increase in our impact factor. It clearly reflects its sterling quality in content, production, and relevance.”

Prof. Rajiv JALAN, former Editor-in-Chief, *Journal of Hepatology*

This year, the *Journal of Hepatology* achieved a record impact factor of 18.946, up from 14.911 in 2017, making it the top specialist liver disease journal in the world. This latest factor also makes it the second most impactful gastroenterology journal, only 0.28 points behind the leading publication. The ranking reveals that the journal has surged ahead with an impressive 26% increase of the impact factor in one year, and a total increase of more than 50% in the past two years.

New Editor-in-Chief, Paolo ANGELI



In April, the EASL Governing Board appointed Prof. Paolo ANGELI as new Editor-in-Chief of the *Journal of Hepatology*. He has been an Associate Editor of the *Journal* for the past eight years and has himself authored over 250 peer-reviewed articles that have shaped the clinical management of patients with cirrhosis.

Paolo ANGELI is full Professor of Internal Medicine and Chief of the Unit of Internal Medicine and Hepatology (UIMH) at the Department of Medicine (DIMED), University of Padua, Italy. He also chairs the EASL-CLIF Steering Committee – a body involving over 110 hospitals from across Europe.

His main area of scientific interest is clinical hepatology, with a particular focus on cirrhosis,

acute-on-chronic liver failure, and liver transplantation. It was because of this expertise that he led the development of new EASL Clinical Practice Guidelines on the management of patients with decompensated cirrhosis in 2018.

Throughout his impressive career, Prof. ANGELI has developed close clinical, research, and personal collaborations with hepatologists from many centres in Europe, the Americas, and Asia, so he brings immense experience and influence to his new role.

Prof. ANGELI's appointment follows the departure of Prof. Rajiv JALAN, who during his five-year tenure consolidated the journal's position as one of the most influential in the field and increased its scientific and geopolitical outreach.

JHEP Reports



In response to the overwhelming number of submissions to the *Journal of Hepatology* and the need to better serve the needs of its members, the EASL Governing Board decided in 2018 to initiate a second journal, *JHEP Reports*.

The new publication, which launched in May 2019, reflects the changing ways many of us access information, by providing articles in a digital, open-access format.

Just like the *Journal of Hepatology*, *JHEP Reports* shares the same commitment to quality and integrity, with articles selected only once they have satisfied rigorous peer review standards.

New Editor-in-Chief, Jessica ZUCMAN-ROSSI



Prof. Jessica ZUCMAN-ROSSI was appointed first Editor-in-Chief of EASL's new open-access journal, *JHEP Reports* when it launched earlier this year. Prof. ZUCMAN-ROSSI is Professor of Oncology at Paris Descartes University and director of the Inserm Unit "Functional Genomic of Solid Tumors" in Paris, France.

Prof. ZUCMAN-ROSSI has coordinated several consortia for liver cancer research, in particular within the International Cancer Genome Consortium (ICGC) and the Heterogeneity Tumor Environment project. Currently, she is executive secretary of the International Liver Cancer Association (ILCA), member of the Hepatobiliary Neoplasia special interest group committee at AASLD, and also acts as Co-editor for the *Journal of Hepatology* (2014–2019).

The *JHEP Reports*' editorial team is composed of six internationally reputed Editors who bring wide-ranging expertise and guarantee a fair evaluation process:

“ Our goal is to become a respected channel for innovation in hepatology by publishing outstanding basic, translational, and clinical studies. ”

Prof. Jessica ZUCMAN-ROSSI, Editor-in-Chief, *JHEP Reports*

Prof. Marina BERENQUER (University of Valencia) covers viral hepatitis and transplantation, Prof. Sven FRANCKUE (University of Antwerp) NASH and metabolism, Prof. Thierry GUSTOT (Université Libre de Bruxelles) cirrhosis and alcohol-related diseases, Prof. Robert SCHWABE (Columbia University)

innovation and basic research, and Prof. Morris SHERMAN (Toronto General Hospital) liver tumours.

Clinical Practice Guidelines

EASL's Clinical Practice Guidelines (CPGs) assist

physicians, healthcare providers, patients, and other interested parties in the clinical decision-making process. The EASL guidelines present a range of state-of-the-art approaches for the diagnosis and treatment of liver diseases. In 2019, EASL published CPGs on occupational liver diseases and drug-induced liver injury.



FELLOWSHIPS AND RESEARCH SUPPORT

Fellowships

“ The EASL Hepatology Fellowships are a great opportunity, not only to get financial support, but also to attend and present results at the ILC, an event gathering worldwide experts in the field of hepatology. ”

Dr Teresa CARDOSO DELGADO, Liver Disease Lab, *Vizcaya, Spain*

EASL Daniel ALAGILLE Award

The Daniel ALAGILLE Award provides research support for Young Investigators active in the field of paediatric and adult genetic cholestatic disease-causing mechanisms.



Dr André A. SANTOS

PhD Studentship Juan RODES

This competitive PhD student Research Fellowship programme is directed at young graduates who want to achieve a PhD degree in the field of basic, translational, or clinical hepatology. The programme is open to Europeans and non-Europeans who wish to conduct a PhD thesis at a European centre.



Dr Sonia SELICEAN



Ms Teresa BREVINI

Postgraduate Fellowship Sheila SHERLOCK

This competitive Postdoctoral Research Fellowship programme targets the most promising newly qualified postgraduate researchers who wish to expand research fields and start developing their independent research careers. The programme is open to Europeans and non-Europeans who wish to conduct postgraduate research at a European centre. Applicants must hold a PhD and/or an MD degree and have no more than two years of postgraduate research experience.



Dr Gloria ÁLVAREZ-SOLA



Dr Ingrid WEI ZHANG

“The application process was refreshingly straightforward. I was made to feel a part of the hepatology family.”

Dr Jan MAŠEK, Karolinska Institutet, Sweden

Short-term Training Fellowship Andrew K. BURROUGHS

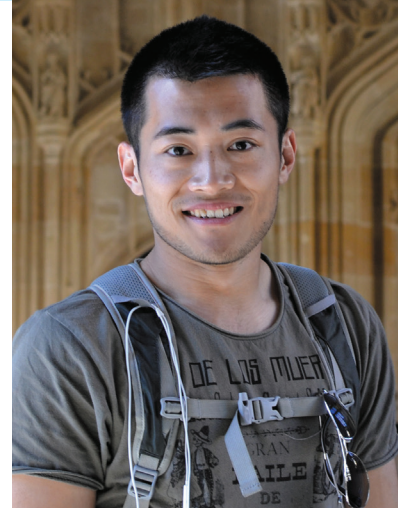
This programme is directed at postgraduate investigators (basic and clinical investigators) who intend to spend a limited amount of time (3-6 months) at a foreign institution to accomplish a very focussed research project, to learn an experimental procedure or methodology, or to get in-depth knowledge on a sophisticated, clinical diagnostic procedure not available at the home institution.



Dr César GASPARI



Dr Tanvi KHERA



Dr Kelvin YIN

Mentorship

The EASL Mentorships Programme was created as a means of enhancing scientific exchange and personal developmental relationships in which a more experienced and knowledgeable hepatologist would guide a Young Investigator through a crucial stage of their career path.



**Mentee:
Dr Andrés CONTHE**



**Mentor:
Prof. Thomas BERG**

EASL Emerging Leader Award

The EASL Emerging Leader Award is a yearly award specifically dedicated to young fellows, up to 40 years of age, who are active members of EASL. Every year, two Young Investigator Awardees are selected, based on their international liver research achievements to date.



Prof. Martin GUILLIAMS



Mentee:
Dr Coskun Ozer
DEMIRTAS



MENTOR:
Prof. Maurizia R.
BRUNETTO



Dr Virginia
HERNÁNDEZ-GEA

Registry grants for scientific research

As a major European association dedicated to pursuing excellence in liver research and to providing education to all those interested in hepatology, EASL promotes research and education through the sharing of research findings in hepatology. Considering the difficulties faced by researchers in our field, the EASL Governing Board has decided to create the EASL Registry Data Collection Grant to provide funding in support of consortia groups dedicated to data gathering with a specific focus on liver disease.

EASL Registry Grants

Dr Jesús MARÍA BANALES, European Cholangiocarcinoma (E-CCA) Registry, Spain

Prof. Valérie MCLIN, International Registry of Congenital Portosystemic Shunts, Switzerland

IMPACT IN ADVOCACY

The EASL Policy and Public Health Committee

The EASL Policy and Public Health Committee (PPHC) met in person twice in 2019; once during the International Liver Congress™ and again in mid-December. Additionally, the PPHC had a number of conference calls throughout the year.

During the Committee’s December meeting, Prof. Helena CORTEZ-PINTO, EASL’s EU Policy Councillor and Chair of the PPHC announced she would be stepping down as EU Councillor and as Chair, as she had recently been elected Vice-President of United European Gastroenterology (UEG). The new Chair of the PPHC is Prof. Maria BUTI, who had been shadowing Prof. CORTEZ-PINTO since April 2019. Antonio CRAXÌ, Mojca MATIČIČ, Nick SHERON, Martine WALMSLEY, and Shira ZELBER-SAGI continue their terms as members of the Committee.

Meeting with the national societies

Prof. CORTEZ-PINTO presented the work of the PPHC to the national societies at a meeting held during ILC. She also provided an overview of the HEPAHEALTH I project, which had been unveiled at ILC in 2018, indicating that the data was available for use by the national societies.

New EASL policy statements

Five new policy statements were unveiled at the International Liver Congress™ (ILC). They focussed on food, obesity, and non-alcohol related fatty liver disease (NAFLD), hepatitis C elimination, liver disease and migrant health, screening of blood donations for hepatitis E virus, and alcohol related liver disease (ALD).

The policy statements, which were developed by key opinion leaders on EASL’s PPHC,

together with co-opted experts in the field, highlight the measures policymakers can take to prevent an increase in liver disease.

The EASL–Lancet Commission on Liver Disease

The EASL–Lancet Commission continued with its work in 2019, meeting twice in as it continued to build on the work done by the UK Lancet Commission, and on epidemiological work done by EASL. The Commission, which brings together more than 35 European experts and key opinion leaders, aims, among other things, to quantify the burden of liver disease in Europe, identify key challenges and opportunities for tackling the increasing health burden, and examine different evidence-based policies that can reduce liver deaths and health inequities. The EASL–Lancet Commission is Chaired by Profs Patrizia BURRA, Michael MANNIS, and Tom HEMMING KARLSEN.



The work of the Commission is expected to be finalised before the end of 2020.

First EASL–EILF Patient Forum

At ILC 2019, EASL and the EASL International Liver Foundation (EILF) gathered several like-minded patient and civil society organisations at a meeting aimed at discussing how EASL and EILF could better interact with patient and civil society groups. The meeting, the first of its kind, resulted in constructive discussion and a number of suggestions, some of which will be incorporated into EASL and EILF’s work over the coming months.

HEPAHEALTH

At its meeting in December 2019, the EASL Governing Board gave its approval for the EASL PPHC to proceed with the contract for HEPAHEALTH 2, a project to build on the work undertaken in HEPAHEALTH 1. The first project reported on the epidemiological burden of liver disease in the wider European region. The HEPAHEALTH 2 project, to run from March 2020 to February 2022, intends to explore synergies between risk factors for

liver disease and the impact of potential interventions.

Attributable Fraction Study

The Attributable Fraction Study, which is a collaboration between EASL, the European Centre for Disease Prevention and Control (ECDC), and the WHO, has seen good progress being made, with the results of the European pilot of the study protocol (which focussed on Bulgaria and Portugal) almost finalised. In addition, there has been a proposal for a larger sentinel study.

Our partnerships in Brussels

BioMed Alliance: as in previous years, EASL has continued to work closely with the Alliance for Biomedical Research (BioMed Alliance) as the European Commission moves closer to the launch of Horizon Europe, the new funding programme which will run from 2021 to 2027.

During the BioMed Alliance’s General Assembly meeting in November 2019, EASL submitted the candidacy of Prof. Tom HEMMING KARLSEN who was

subsequently elected to the Board of the Alliance.

European Chronic Disease Alliance (ECDA) and European Public Health Alliance (EPHA): ECDA, EPHA, and the NCD Alliance launched a joint paper, Towards an EU Strategic Framework for the Prevention of Non-communicable Diseases (NCDs). The joint paper calls on the European Union Institutions, especially the European Commission, to advance firm action on NCDs by establishing an EU Strategic Framework for the Prevention of NCDs towards 2030.

Eurocare: alcohol awareness week

As happens each year, EASL participated in Awareness Week on Alcohol Related Harm (AWARH), which is coordinated by Eurocare. This year, the theme was “Alcohol and Mental Health”. The AWARH partners took the opportunity to draw attention to the need for detailed, government-monitored, alcohol labelling to become a Europe-wide regulation emphasising that consumers have a right to information on the risk of alcohol consumption and its association with a range of diseases and conditions.



EASL, Eurocare, CPME, and UEG produced a video called “Alcohol labelling – right to know”, which was widely disseminated during AWARH.

EU-funded projects

EASL is the communications and dissemination arm for three major EU-funded projects for diagnosing and combating liver disease: ALIVER, LITMUS, and MICROB-PREDICT.

Additionally, at the end of 2019, we received confirmation that two further liver disease related projects had been successful in their grant applications: DECISION and LiverScreen. More information will be available in 2020.

ALIVER

The ALIVER Consortium of 11 institutions from seven European countries has

developed an innovative liver dialysis machine called DIALIVE that helps the liver to naturally regenerate or, where that does not prove possible, keeps patients alive and healthy until a donated liver becomes available.

Following a €6.4 million EU Horizon 2020 grant in 2017, the consortium has been developing the DIALIVE device, created a 24-patient study and has begun to apply data analytics to identify



“ Early diagnosis and management of NAFLD patients is becoming a global public health concern. There is an urgent need to define and validate a set of non-invasive biomarkers for diagnosis, prognosis, prediction, and monitoring of the disease and its treatments. ”

Céline FOURNIER, Chief Medical Officer of new LITMUS partner Echosens SA

new biomarkers that could help to optimise treatment protocols. The project runs until 2020.

EASL, as a Swiss partner in the ALIVER project, has received funding from the Swiss State Secretariat for Education, Research and Innovation (SERI) under contract number 16.0204.

LITMUS

Liver Investigation: Testing Marker Utility in Steatohepatitis (LITMUS) is a pioneering European research project, funded by the European Innovative Medicines Initiative (IMI) 2 Joint undertaking. It brings together clinical scientists from international research-intensive universities and some of the world's leading pharmaceutical companies from the European

Federation of Pharmaceutical Industries and Associations (EFPIA) to develop new diagnostic tests for assessing patients with non-alcohol related fatty liver disease (NAFLD).

Since its launch in November 2017, LITMUS has been coordinated by Newcastle University, working with EFPIA partner Pfizer, and has seen its project budget grow to €46.5 million. This year, the project expanded from 47 to 53 partners, all working towards the common goals of developing, validating, and qualifying better biomarkers for testing NAFLD.

MICROB-PREDICT

2019 saw the launch of MICROB-PREDICT, a €15 million EU

Horizon 2020-financed project, uniting the expertise of 22 European partners, including EASL, in ten countries, that includes world-leading microbiome specialists, clinical experts, and patient organisations.

The consortium are investigating the human microbiome to identify predictors and mechanisms associated with the development of decompensated cirrhosis and progression to acute-on-chronic liver failure (ACLF), a major cause of morbidity and mortality worldwide.

At present there are very few studies into this area of liver disease, meaning there is a real lack of effective treatment options for patients.

“ This project will develop point-of-care devices to predict responses to specific treatments for patients with decompensation of cirrhosis and ACLF. The project has the potential to change clinical practice towards more personalised medicine. ”

Prof. Jonel TREBICKA, Scientific Coordinator, MICROB-PREDICT consortium

FINANCIAL OVERVIEW

Treasurer's Report

Dear Members,

It is my honour to provide you with the Treasurer's Report for the 2019 financial accounts.

In 2019, our association grew in performance, at many professional levels. In parallel to our regular activities, The Home of Hepatology carried out several structural and administrative improvements.

The International Liver Congress™ (ILC), held in Vienna in 2019, achieved its targets. The congress remains a major financial pillar for our organisation, generating, once again, a significant contribution to our income. In addition to this large event, we ran several scientific and educational events related to the mission of EASL.

With its record-breaking impact factor, the *Journal of Hepatology* is now the top-ranking hepatology journal worldwide. Income from subscriptions also contributed to EASL's financial wellbeing of 2019.

This year also saw the launch of *JHEP Reports*, a new open-access journal. As part of our long-term strategy, we are convinced that it will contribute positively to the financial stability of the association and our publications programme in particular.

Our finance and accounting are now managed in-house. With a positive financial result for the year of €922,000, EASL is in a favourable financial position. This is thanks to both an increase in income from our events, primarily the ILC 2019, and an overall reduction of costs.

EASL's 2019 financial accounts have been audited by an external audit firm, A. Gautier Société Fiduciaire, as per standard practice, and following the Swiss Code of Obligations and the association's Constitution. This audit has confirmed that EASL's accounts are held in good order and reflect properly the financial status of the association.

I am therefore pleased to confirm that our association is in a healthy financial situation and well prepared to face the challenges of the future. This year was my first, serving as EASL's Treasurer, and I thank you for your confidence. I look forward to steering our association to further years of success in its important mission.



TREASURER
Prof. Francesco NEGRO

Auditor's Report



Report of the statutory auditors
on the limited statutory examination
to the general meeting of

European Association for the Study of the Liver (EASL), Geneva

As statutory auditors, we have examined the financial statements (balance sheet, income statement and notes) of European Association for the Study of the Liver (EASL), Geneva for the year ended 31 December 2019.

These financial statements are the responsibility of the Board. Our responsibility is to perform a limited statutory examination on these financial statements. We confirm that we meet the licensing and independence requirements as stipulated by Swiss law.

We conducted our examination in accordance with the Swiss Standard on the Limited Statutory Examination. This standard requires that we plan and perform a limited statutory examination to identify material misstatements in the financial statements. A limited statutory examination consists primarily of inquiries of entity's personnel and analytical procedures as well as detailed tests of entity's documents as considered necessary in the circumstances. However, the testing of the operational processes and the internal control system, as well as inquiries and further testing procedures to detect fraud or other legal violations, are not within the scope of this examination.

Based on our limited statutory examination, nothing has come to our attention that causes us to believe that the financial statements and the proposed appropriation of available earnings do not comply with Swiss law and the entity's articles of incorporation.

A. Gautier, Société Fiduciaire SA
Antoine Gautier,
Licensed Audit Expert n° 100651

Geneva, 12 March 2020
AG/lw 100494ROR-19 - 12 ex.

Enclosures : - Financial statements (balance sheet total EUR 20.001.248, income statement, and notes)

2019 financial statements

Balance Sheet, as of 31st December

	2019 EUR	2018 EUR
Cash and cash equivalents	7,576,600	7,123,053
Accounts receivables and other receivables	656,797	1,090,315
Prepaid expenses and accrued income	1,196,576	819,396
Total Current Assets	9,429,974	9,032,765
Financial assets	6,102,694	6,193,775
Tangible fixed assets	4,468,580	4,655,740
Intangible fixed assets	1	31,420
Total Non-current Assets	10,571,275	10,880,935
Total Assets	20,001,248	19,913,699
Accounts Payable	230,787	212,597
Other short-term liabilities	227,195	265,354
Deferred income and accrued expenses	3,209,029	3,965,082
Total Current Liabilities	3,667,011	4,443,032
Mortgage loan	1,989,406	1,899,641
Long-term provisions	722,631	899,281
Total Long-term Liabilities	2,712,037	2,798,922
Unused restricted fund	183,384	170,461
Total Allocated Funds	183,384	170,461
General funds	12,501,285	13,939,571
Net result for the period	937,532	(1,438,287)
Total Reserve Funds	13,438,817	12,501,285
Total Liabilities and Reserve Funds	20,001,248	19,913,699

Income Statement for the year ended

	2019 EUR	2018 EUR
International Liver Congress	9,067,242	8,605,520
Membership	675,924	778,068
Journal of Hepatology	1,154,548	873,526
UEG support	97,143	57,143
Sponsors – unrestricted funds	273,486	487,482
Sponsors – restricted funds	–	254,090
Net Building Revenue	114,214	98,790
Small Conferences	867,204	617,142
Other revenues	548,158	50,940
Total Operating Income	12,797,919	11,822,701
International Liver Congress	(5,110,403)	(5,216,742)
Fellowships and Registry Grants	(780,956)	(774,222)
Small Conferences (Monothematic/Special conference)	(964,165)	(871,079)
School of Hepatology	(104,470)	(140,749)
Journal of Hepatology	(463,635)	(384,374)
Overheads	(192,616)	(191,896)
Legal, Consultancy, and Audit Fees	(405,545)	(1,194,998)
Marketing and Communication	(117,284)	(49,625)
Booths and Promotion	(59,866)	(107,937)
Sponsored Meetings	(42,827)	(29,448)
GB Meetings and Honorarium	(131,315)	(142,134)
Clinical Practice Guidelines and Committees	(31,386)	(105,940)
EU Advocacy/EU Policy and Public Affairs	(157,950)	(185,704)
Education and Scientific Activities	(105,880)	(52,450)
Other expenses	(170,997)	(150,337)
Total Operating Expenses	(8,839,294)	(9,597,634)
Operating Result	3,958,625	2,225,067
Personnel	(2,753,537)	(2,506,669)
Depreciation	(237,452)	(262,557)
Financial Income	601	15,291
Financial Expenses	(176,610)	(113,196)
Unrealized Financial Gain on Bonds	498,019	166,277
Unrealized Financial Loss on Bonds	(36,495)	(184,888)
Foreign Exchange Gain	(174,794)	(122,424)
Financial Result	110,722	(238,939)
Exceptional income and expenses	(121,303)	(484,727)
Net result before changes in funds	957,055	(1,267,826)
Changes in funds	(19,523)	(170,461)
Net result after changes in funds	937,532	(1,438,287)

Notes to the 2019 financial statements

General principles

Accounting principles applied in the preparation of the financial statements

These financial statements have been prepared in accordance with the provisions of commercial accounting as set out in the Swiss Code of Obligations (Art. 957 to 963b CO, effective since 1 January 2013). Significant balance sheet items are accounted for as follows:

Accounts receivable

Accounts receivable are amounts due from parties for services performed in the ordinary course of business. If collection is expected in one year or less (or in the normal operating cycle of the business if longer), they are classified as current assets.

These receivables are valued at their nominal values. Credit default risks are accounted for by specific and general allowances. General allowances are recognised for items that have not yet been considered with a specific allowance. The general allowance is based on the assumption that the default risk increases as the debt becomes increasingly overdue.

Recognition of revenue

The main revenue stream of the Association are Membership fees and Annual Congress fees.

Membership fees are recognised in the accounting period in which the fees relate to.

Annual Congress revenue is mainly composed of fees received from participants and sponsors and recognised based on the contract specifications when the following conditions are all met:

- the amounts can be measured reliably,
- it is probably that the Association will receive future economic benefits.

Non-current assets and leases

Property, plant and equipment are valued at purchase cost less any depreciation required by generally accepted accounting principles. Depreciation is charged on a straight line basis over the useful life of the fixed asset. The assets' residual values and useful lives are reviewed, and adjusted if appropriate, at the end of each reporting period.

Gains and losses on disposals are determined by comparing the proceeds with the carrying amount and are recognised in the income statement.

The useful lives of assets have been determined as follows:

Type of assets	Useful life
Building	30 years
Furniture and Equipment	10 years
Computer & Hardware	3 years
Intangible Assets	3 years

Foreign currencies

Items included in the financial statements were measured using the currency of the primary economic environment in which the Association operates ("the functional currency"), which is Euro ("EUR").

Monetary and non-monetary items in Swiss Francs are translated into Euros at the following exchange rates:

Foreign currency		Profit and loss statement	Balance sheet
2019	EUR/CHF	1,1276	1,0870
2018	EUR/CHF	1,1709	1,1269

The exchange rates used for balance sheet items are the rates prevailing on December 31; the exchange rates used for transactions conducted during the course of the year and for items in the profit and loss statement are average rates for the financial year.

For reasons of simplification, from 2019 onwards and in accordance with Swiss law, the Financial Statements are reflected in EUR only.

Details, analyses and explanations to the financial statements

The European Association for the Study of the Liver (“EASL”) is an Association registered in Geneva (2018), previously in Zurich (2017), Switzerland.

The number of full-time equivalents did not exceed 50 on an annual average basis.

Receivables and liabilities

Receivables and liabilities towards direct or indirect participants and management bodies and entities in which there is a direct or indirect participation must in each case be shown separately on the balance sheet or in the notes to the financial statements (art. 959a para. 4 CO). This only applies if these items are not presented in the balance sheet as suggested.

Mortgage schedules

Commitments on the building – Rue Daubin 7 :

- n°10527 of 30.09.2008 for CHF 2,100,000 – First Row
- n°10527 of 30.09.2008 for CHF 1,500,000 – Second Row
- n°2013-752 of 30.12.2012 for CHF 200,000 – Third Row

Pension liabilities

On 31 December 2019, it amounted to EUR 77,459 (CHF 84,194)

On 31 Decembre 2018, it amounted to EUR 79,877 (CHF 91,946)

Collateral for third-party liabilities

	2019 in EUR	2018 in EUR
Guarantee obligations	34,000	34,000

Total amount resulting from the dissolution of replacement reserves and the material dissolution of excess hidden reserves

No hidden reserves were released in the year under review.

Significant events occurring after the balance sheet date

None

Fees paid and accrued to the auditor

	2019 in EUR	2018 in EUR
Audit services	22,533	28,930

MESSAGE FROM THE MANAGING DIRECTOR

Looking towards the future

Having joined the EASL community in the last quarter of the year, I have had relatively little involvement in the significant achievements made in 2019. I come on board as EASL is already bringing to life a refreshed vision of our future and delivering to the world of hepatology a raft of new offerings and opportunities. For that solid basis, I am grateful to my predecessors and to all of you with whom they worked so tirelessly. In particular, I would like to thank the EASL Office, the Governing Board, and the Committees for their warm and generous welcome.

My professional life has been spent serving medical associations and I am honoured to now help lead EASL through a new phase, taking stock of our strengths and adjusting them to the demands of an evolving society and a changing profession.

We should all be proud to be able to work for, contribute to, or simply be part of this unique association and it is that sense of belonging and mission that I intend to promote.

Leadership and membership rightly expect the highest standards and performance from the EASL Office and my first priority is to ensure that we are fit for purpose.

This will require further alignment of EASL office resources with EASL strategic goals and more coordination in the way that we engage with those that we are here to support. We will continue to invest in new skills and technologies, but will need to remain alert to changes in the workplace and nimble enough to allocate limited resources to maximum effect. Accountability and respect must be guiding principles within our own organisation, and also in the way we interact with partners in other medical organisations, civil society, and the healthcare industry.

I write this in the early months of 2020, it is already apparent that our future as an association will depend more than ever on the close alignment of our leadership, membership, staff and on the continued energy, expertise, and commitment that we all bring.

I have no doubt the same qualities that have made EASL what it is today are the same as those that we will need to see us through these most uncertain of times.

I look forward to reporting back to you on what will certainly be 12 extraordinary months ahead, a period that will see us all put to the test and during which we will all have the opportunity to show our true colours in support of our communities and families.



MANAGING DIRECTOR
Ben HAINSWORTH

EASL 2019
EASL COMMUNITY HUB
EASL 2019
EASL COMMUNITY HUB

EASL
The home of respiratory
SOCIAL MEDIA COFFEE
Let's talk SCIENCE
but first, COFFEE

Catering area

CHALLENGE ACCEPTED



ACKNOWLEDGEMENTS

EASL would like to thank AbbVie, Bristol-Myers Squibb, and Gilead for their continuous support.

These collaborations are key to reducing the incidence and burden of liver disease, and we look forward to continuing our fruitful partnership to fulfil our joint mission of tackling liver disease and maximising your presence within the hepatology arena and across other disciplines in 2020.

abbvie



Bristol-Myers Squibb



GILEAD

EASL Office
Home of Hepatology
7 rue Daubin
1203 Geneva
Switzerland
+41 (0) 22 807 03 60
easloffice@easloffice.eu
www.easl.eu





**JOIN THE
COMMUNITY!**